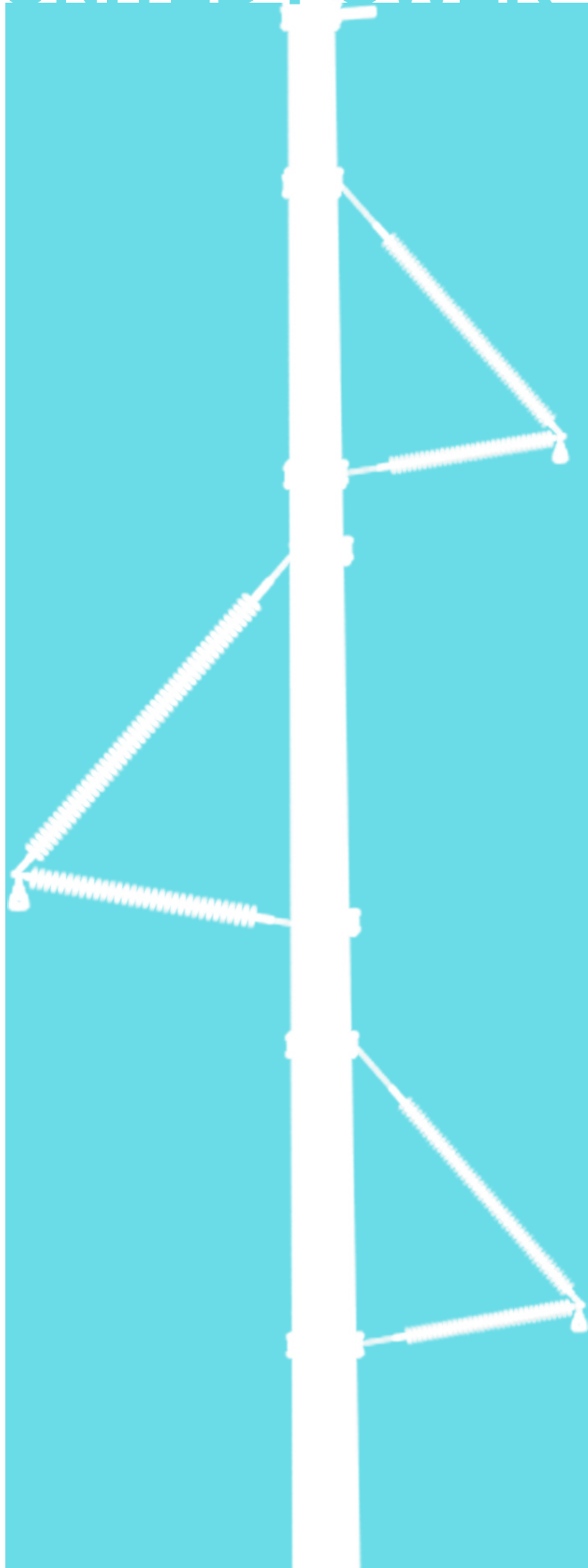


APPENDIX H
VISUAL SIMULATIONS

UNITED POWER TRANSMISSION SYSTEM IMPROVEMENT PROJECT: PHASE III



April 2012

Visual Simulations

Existing Conditions



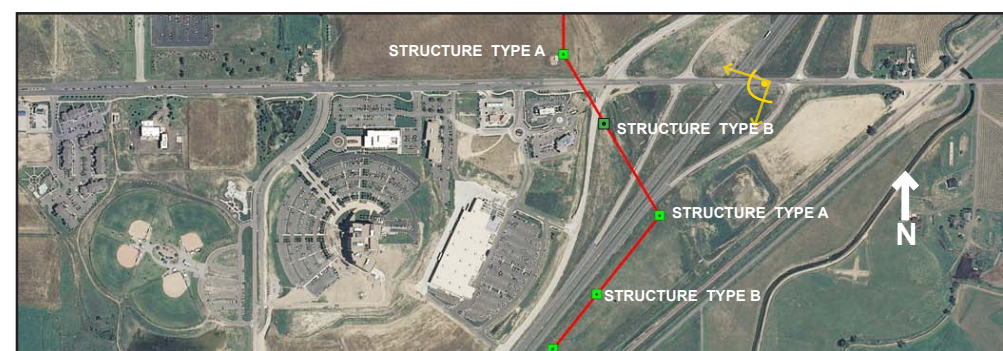
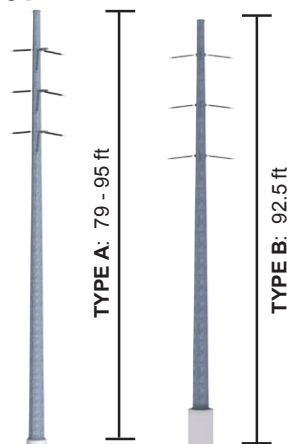
Structures Simulation



Photograph Information

- Photo Point Number: 49
- Date of Photograph: 2/16/2011
- Time of Photograph: 11:43 AM
- Weather Condition: Mostly Sunny
- Viewing Direction: WSW
- Latitude: 39° 58' 20.421" N
- Longitude: 104° 45' 2.093" W

Typical Structure



LEGEND



Key Observation Point Location



Preliminary Transmission Structure Locations



Preliminary Transmission Route Alignment

**Photographic Simulation:
Preliminary Engineering
Preferred Route**

View Location: View from Bromley Lane overpass east of I-76 looking west-southwest.



Existing Conditions



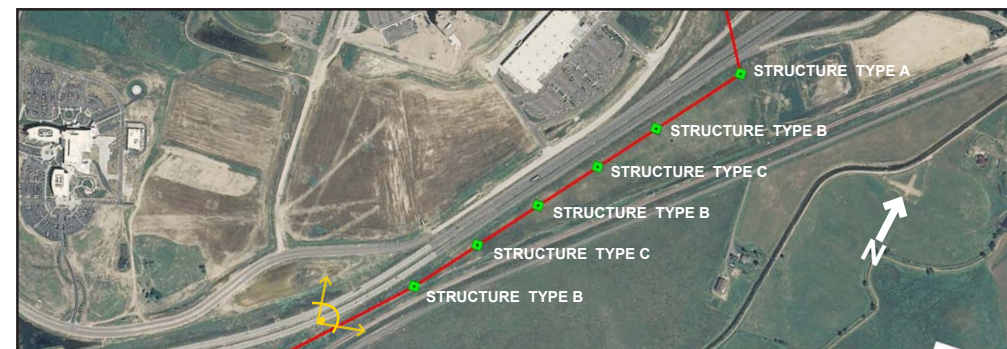
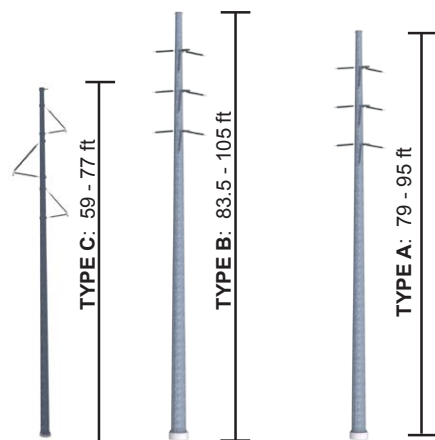
Structures Simulation



Photograph Information

- Photo Point Number: 38
- Date of Photograph: 2/16/2011
- Time of Photograph: 10:52 AM
- Weather Condition: Mostly Sunny
- Viewing Direction: NE
- Latitude: 39° 57' 46.301" N
- Longitude: 104° 45' 40.679" W

Typical Structure



LEGEND

- Key Observation Point Location
- Preliminary Transmission Structure Locations
- Preliminary Transmission Route Alignment

Photographic Simulation:
Preliminary Engineering
Preferred Route

View Location: View from I-76 northbound lane looking northeast, approximately 0.7 miles southwest of the Bromley Lane exit.



Existing Conditions



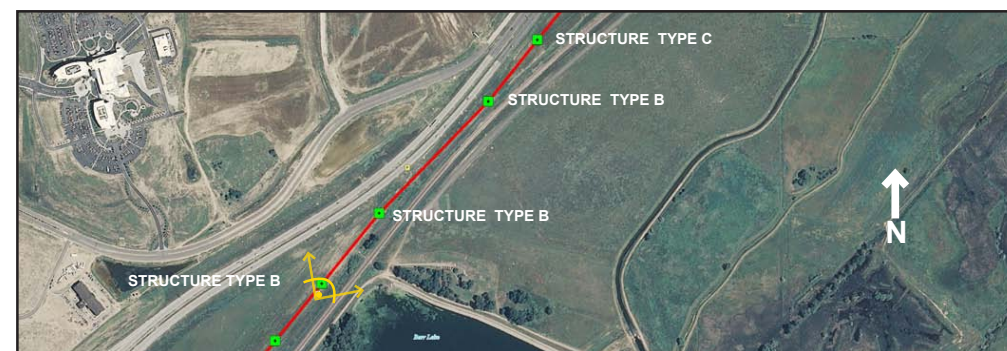
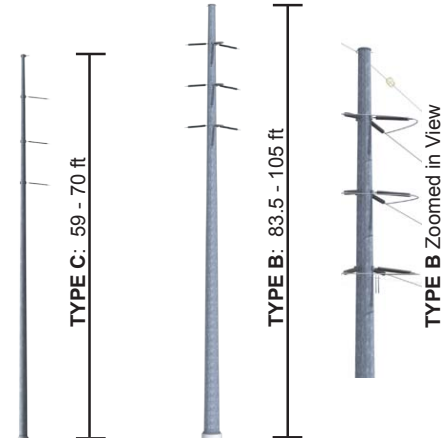
Structures Simulation



Photograph Information

- Photo Point Number: 52
- Date of Photograph: 2/16/2011
- Time of Photograph: 12:49 PM
- Weather Condition: Mostly Sunny
- Viewing Direction: N
- Latitude: 39° 57' 38.005" N
- Longitude: 104° 45' 48.544" W

Typical Structure



LEGEND

- Key Observation Point Location
- Preliminary Transmission Structure Locations
- Preliminary Transmission Route Alignment

Photographic Simulation:
Preliminary Engineering
Preferred Route

View Location: View from two-track road looking north between I-76 and BNSF Railway, 0.5 miles northeast of 144th Avenue.



Existing Conditions



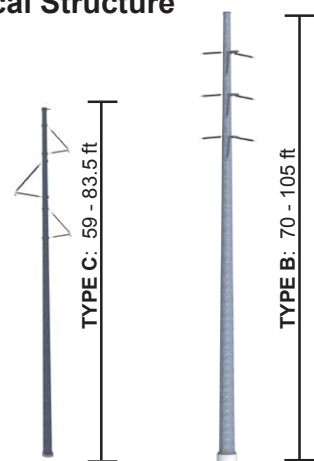
Structures Simulation



Photograph Information

- Photo Point Number: 013
- Date of Photograph: 3/20/2012
- Time of Photograph: 12:05 PM
- Weather Condition: Mostly Sunny
- Viewing Direction: SW
- Latitude: 39°57'37.626"N
- Longitude: 104°45'45.625"W

Typical Structure



LEGEND

- Key Observation Point Location
- Preliminary Transmission Structure Locations
- Preliminary Transmission Route Alignment

**Photographic Simulation:
Preliminary Engineering
Preferred Route**

View Location: View from the northwest corner of Barr Lake perimeter trail, looking southwest. 0.11 miles southeast of I-76.



Existing Conditions



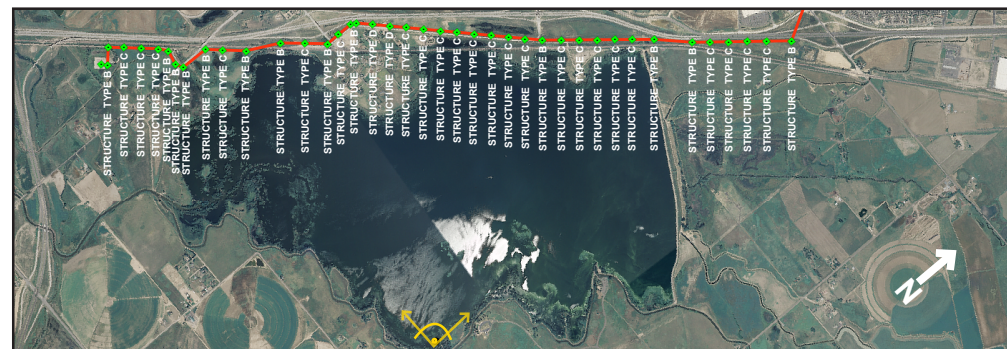
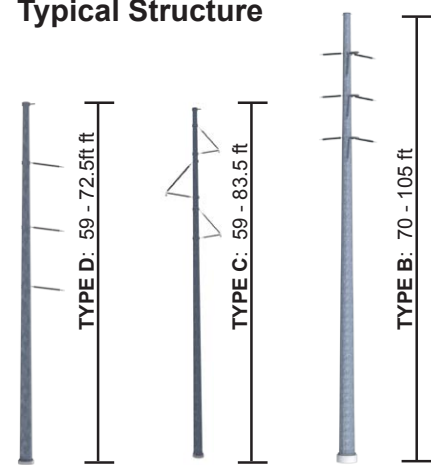
Structures Simulation



Photograph Information

- Photo Point Number: PP31
- Date of Photograph: 1/25/2011
- Time of Photograph: 12:00 PM
- Weather Condition: Partly Cloudy
- Viewing Direction: NW
- Latitude: 39° 56' 5.66" N
- Longitude: 104° 45' 11.34" W

Typical Structure



LEGEND

- Key Observation Point Location
- Preliminary Transmission Structure Locations
- Preliminary Transmission Route Alignment

**Photographic Simulation:
Preliminary Engineering
Preferred Route**

View Location: View from the boardwalk at Barr Lake, near Barr Lake Visitor Center, looking northwest.



Existing Conditions



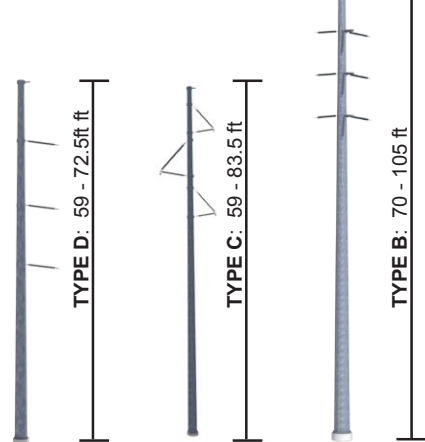
Structures Simulation



Photograph Information

- Photo Point Number: 002
- Date of Photograph: 3/20/2012
- Time of Photograph: 10:37 AM
- Weather Condition: Mostly Sunny
- Viewing Direction: NW
- Latitude: 39°56'36.037"N
- Longitude: 104°46'46.853"W

Typical Structure



LEGEND

- Key Observation Point Location
- Preliminary Transmission Structure Locations
- Preliminary Transmission Route Alignment

**Photographic Simulation:
Preliminary Engineering
Preferred Route**

View Location: View from the corner of East 136th Ave. and Lake Ave. 0.2 miles southeast of I-76, looking northwest.



Existing Conditions



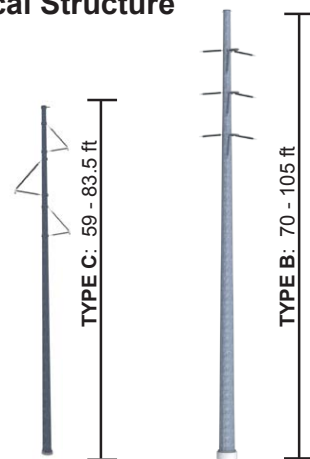
Structures Simulation



Photograph Information

- Photo Point Number: 006
- Date of Photograph: 3/20/2012
- Time of Photograph: 11:01 AM
- Weather Condition: Mostly Sunny
- Viewing Direction: W
- Latitude: 39° 57' 38.005" N
- Longitude: 104° 45' 48.544" W

Typical Structure



LEGEND

- Key Observation Point Location
- Preliminary Transmission Structure Locations
- Preliminary Transmission Route Alignment

Photographic Simulation:
Preliminary Engineering
Preferred Route

View Location: View from Barr Lake perimeter trail, looking west. 0.29 miles east of Buckley Road.



Existing Conditions



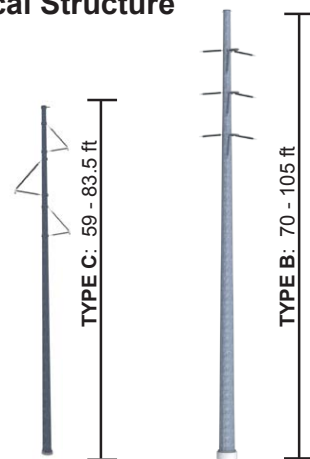
Structures Simulation



Photograph Information

- Photo Point Number: 017
- Date of Photograph: 3/20/2012
- Time of Photograph: 12:41 PM
- Weather Condition: Mostly Sunny
- Viewing Direction: NE
- Latitude: 39°56'7.87"N
- Longitude: 104°47'23.381"W

Typical Structure



LEGEND

- Key Observation Point Location
- Preliminary Transmission Structure Locations
- Preliminary Transmission Route Alignment

Photographic Simulation: Preliminary Engineering Preferred Route

View Location: View from Buckley Road and I-76, looking northeast.



Existing Conditions



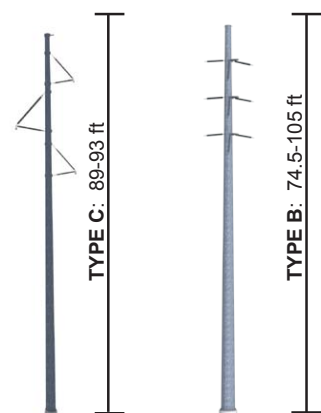
Structures Simulation



Photograph Information

- Photo Point Number: 3BXPP1
- Date of Photograph: 7/25/2011
- Time of Photograph: 11:21 AM
- Weather Condition: Mostly Sunny
- Viewing Direction: NW
- Latitude: 39° 55' 56.74" N
- Longitude: 104° 47' 23.86" W

Typical Structure



LEGEND

- Key Observation Point Location
- Preliminary Transmission Structure Locations
- Preliminary Transmission Route Alignment

Photographic Simulation: Preliminary Engineering Preferred Route

View Location: View of the I-76/Buckley crossing looking north/northwest from Buckley Road on the south side of I-76.

