

Cape & Vineyard Electric Cooperative, Inc.
Brewster Wind Energy Project
General Overview

PURPOSE AND NEED

The Cape & Vineyard Electric Cooperative, Inc. (“CVEC”) is a Massachusetts energy cooperative whose members are certain towns and governmental entities in Barnstable and Dukes Counties, MA.

CVEC’s purposes include developing and/or owning renewable electric generation facilities and procuring and/or selling long-term electric supply or other energy-related goods or services to its member communities and governmental entities. CVEC has proposed the development of a community scale wind energy project (the “Project”), consisting of two (2) land-based wind turbines on municipally-owned land in the member town of Brewster, Massachusetts.

CVEC intends to net meter each of the wind turbines, with the intent of allowing Brewster to net meter all of its electric loads and other members to also receive net metering benefits. The wind turbines will interconnect to the NSTAR distribution system for which CVEC will file an Interconnection Application.

ALTERNATIVES CONSIDERED

As part of overall planning for the Project, the CVEC commissioned the performance of an initial siting study to identify and preliminarily rank proposed locations for the two wind turbines. This study, *Town of Brewster Wind Turbine Feasibility Study* (June 15, 2009) performed by Black & Veatch, examined three potential sites. Based upon a series of screening criteria applied to each proposed location, including wind resource; land use controls; habitat; noise; shadow flicker; ease of interconnection; and costs; preferred site locations were developed. Based on this initial screening, the preferred site selected for the Brewster turbines was the Commerce Park Site.

PROJECT DESCRIPTION

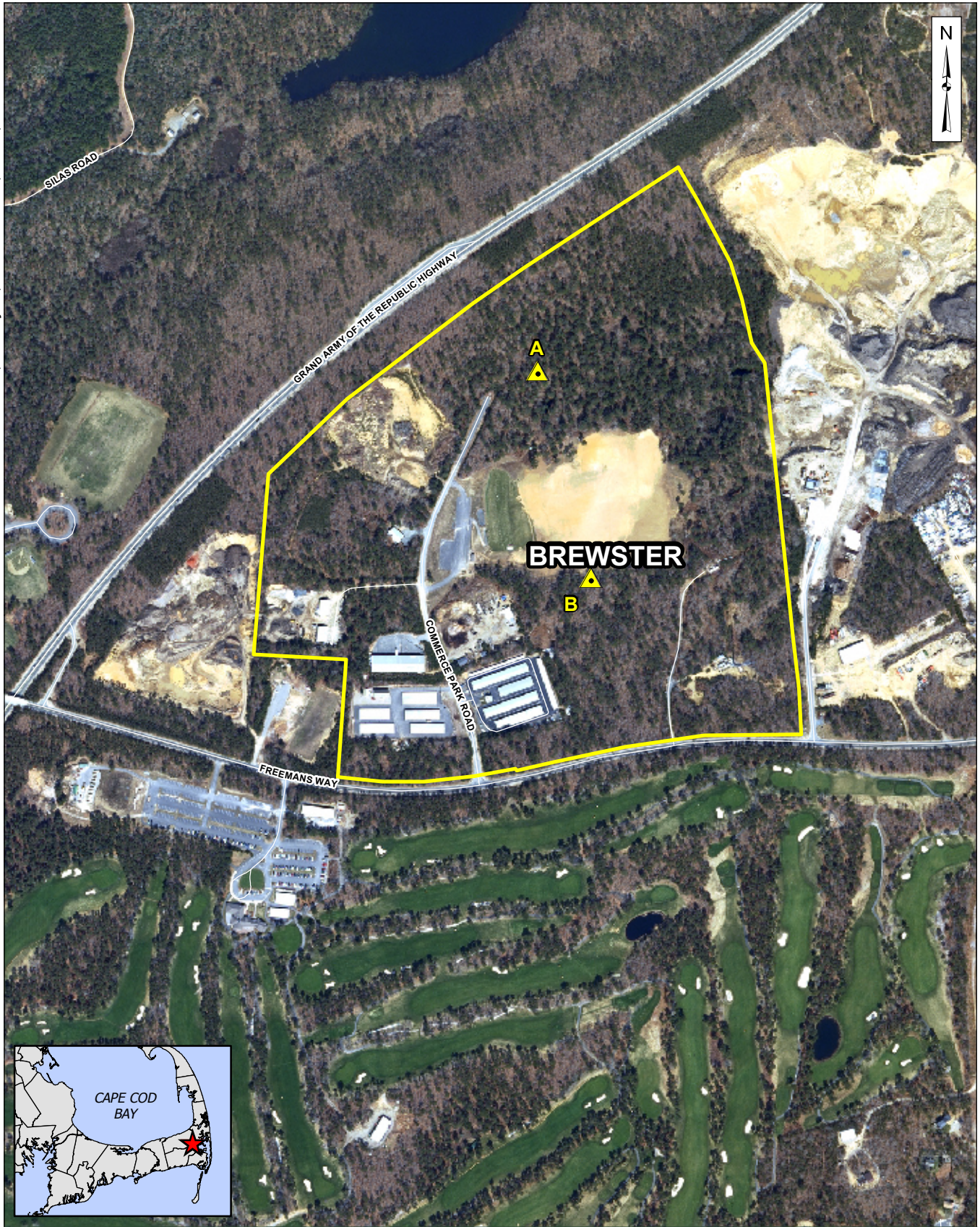
The Project in the Town of Brewster is proposed on the Commerce Park site which was affirmed by the voters of Brewster at an October 2009 Special Town Meeting. The Commerce Park site is located in an industrially zoned area (Figure 1). The Commerce Park location; owned by a CVEC member community, the Town of Brewster; is a zoned industrial area located adjacent to Mid-Cape Highway and approximately 450 feet from a local driving range. The site is easily accessible through existing roads and the Project will not require accessory facilities, such as substations or additional taps.

CVEC and the Town of Brewster are negotiating an Intergovernmental Host Community Agreement to lease the land for twenty (20) years with possible five (5)-year extensions for the Project. The land is undeveloped and wooded with the nearest residence over 1,300 feet away. The two Brewster turbines, sized at least 1.65 megawatts (“MW”) each, are proposed as typical three bladed, upwind rotor horizontal axis design and are expected to be approximately 400 feet tall and developed through a public procurement process.

CONTACTS

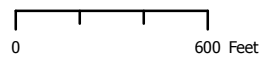
To provide comments or receive more project-specific information, please contact:

Ms. Lauren McGee
RUS Environmental Project Coordinator
Mail Stop 1571
1400 Independence Ave., S.W.
Washington, DC 20250
Phone: (202) 720-1482
Fax: (202)690-0649
Email: lauren.mcgee@wdc.usda.gov
Website: <http://www.usda.gov/rus/water/ees/ea.htm>



CVEC WIND ENERGY FACILITY
 Brewster, Massachusetts

Scale: 1" = 300'



Source: 1) MassGIS, Orthos, 2005
 2) Weston & Sampson, Turbines & Parcel Map, 2010

Legend

- Turbine Location
- Town Boundaries
- Town-Owned Property of Interest

Locus Map
(Brewster Site)

Figure
1