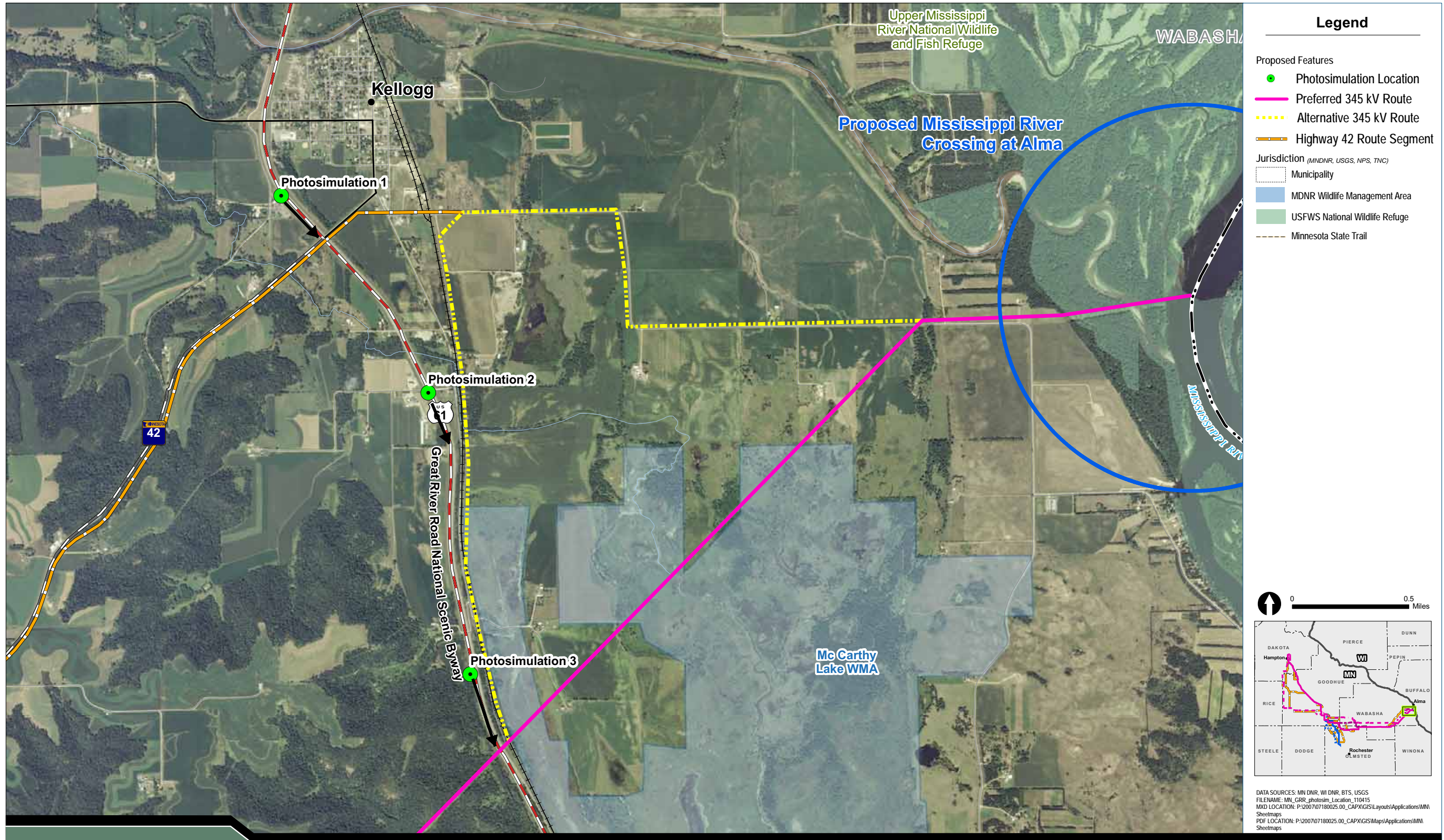


Appendix K – Great River Road National Scenic Byway Photo Simulations



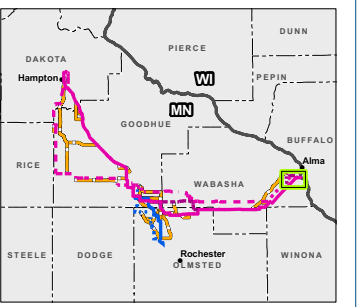
Legend

Proposed Features

- Photosimulation Location
- Preferred 345 kV Route
- - - Alternative 345 kV Route
- Highway 42 Route Segment

Jurisdiction (MNDNR, USGS, NPS, TNC)

- ▭ Municipality
- ▭ MNDNR Wildlife Management Area
- ▭ USFWS National Wildlife Refuge
- - - Minnesota State Trail



DATA SOURCES: MN DNR, WI DNR, BTS, USGS
 FILENAME: MN_GRR_photosim_Location_110415
 MXD LOCATION: P:\200707180025.00_CAPX\GIS\Layouts\Applications\MN_Sheetmaps
 SHEETMAPS: P:\200707180025.00_CAPX\GIS\Maps\Applications\MN_Sheetmaps

CapX2020

Hampton • Rochester • La Crosse 345 kV Transmission Project

Xcel Energy • Dairyland Power Cooperative • Rochester Public Utilities • WPPI Energy • Southern Minnesota Municipal Power Agency

MN Great River Road
 Photosimulation Location Map



Existing Condition

Photopoint 1 - Southbound Great River Road looking southeast. Looking southeast at the Highway 42 Route Segment.



Proposed Condition

Photopoint 1 - Southbound Great River Road looking southeast. Looking southeast at the Highway 42 Route Segment.

Hampton ▪ Rochester ▪ La Crosse 345 kV Transmission Project



Existing Condition

Photopoint 2 - Southbound Great River Road. Looking southeast at the Alternative 345 kV Route.



Proposed Condition

Photopoint 2 - Southbound Great River Road. Looking southeast at the Alternative 345 kV Route.



Existing Condition

Photopoint 3 - Southbound Great River Road. Looking southeast at the Alternative 345 kV Route.



Proposed Condition

Photopoint 3 - Southbound Great River Road. Looking southeast at the Alternative 345 kV Route.

Hampton ▪ Rochester ▪ La Crosse 345 kV Transmission Project



Existing Condition

Photopoint 3 - Southbound Great River Road. Looking southeast at the Preferred 345 kV Route.



Proposed Condition

Photopoint 3 - Southbound Great River Road. Looking southeast at the Preferred 345 kV Route.



Legend

Project Features

- Existing Substation
- Photo Simulation Points

Proposed Alternative Routes

- Q1-Highway 35 Route

Landscape Conditions

- Agricultural
- Bluffs and Blufflands
- Mississippi River and Riparian Areas
- Towns

Scenic Byways
(Census/Digitized EDAW)

- Scenic Byway

Land Cover
(WISCLAND)

- Aquatic
- Urban
- Forest
- Grassland
- Cropland
- Shrubland
- Barren

0 2 4 Miles

Map Vicinity

DATA SOURCES: MNDNR, WDNR, BTS, USGS
 FILENAME: GRR_Landcover_Landscape_101101
 MXD LOCATION: P:\2007\07180025.00_CAPX\GIS\Layouts\Great_River_Assessment
 PDF LOCATION: P:\2007\07180025.00_CAPX\GIS\Maps\Great_River_Assessment

CapX2020

Hampton • Rochester • La Crosse 345 kV Transmission Project

Xcel Energy • Dairyland Power Cooperative • Rochester Public Utilities • WPPI Energy • Southern Minnesota Municipal Power Agency

Landscape Conditions
November 2010

Figure 2: Landscape Conditions



Existing Condition

Photopoint 70 - Buena Vista Park above Alma, WI, looking southwest. The existing double circuit 161 kV transmission line crosses the Mississippi River and Great River Road (WIS 35) at the Dairyland Alma Generation Facility.



Proposed Condition

Photopoint 70 - Buena Vista Park above Alma, WI, looking southwest. The existing transmission line would be rebuilt as a triple-circuit 161 kV / 161 kV / 345 kV transmission line.

Public Service Commission of Wisconsin
REGISTRATION 06/29/11, 9:52:52 AM

Existing Condition



Photopoint 76 - Bluff side pull out, 1.5 miles south of Dairyland's Alma power plant. Looking northwest. Existing Dairyland 161kV line is on right side of photo behind screen of trees, paralleling Great River Road.

Proposed Condition



Photopoint 76 - Bluff side pull out, 1.5 miles south of Dairyland's Alma power plant. Looking northwest. Existing Dairyland 161kV line rebuilt to 345 / 161 kV double circuit on right side of photo paralleling Great River Road. Designed specifically to allow screen of trees to remain.



Existing Condition

Photopoint 76 - Bluff side pull out, 1.5 miles south of Dairyland's Alma power plant. Looking southeast. Existing Dairyland 161 kV line is on left side of photo behind screen of trees, paralleling Great River Road.



Proposed Condition

Photopoint 76 - Bluff side pull out, 1.5 miles south of Dairyland's Alma power plant. Looking southeast. Existing Dairyland 161 kV line rebuilt to 345 / 161 kV double circuit on left side of photo paralleling Great River Road. Designed specifically to allow screen of trees to remain.



Photopoint 174 - 2.0 miles southeast of Dairyland's Alma power plant, looking southeast. The existing Dairyland Q1 161 kV transmission line crosses the Great River Road (WIS 35) at the Dairyland Power Road intersection.



Photopoint 174 - 2.0 miles southeast of Dairyland's Alma power plant, looking southeast. The existing Dairyland Q1 161 kV transmission line would be rebuilt as a double-circuit 161 kV / 345 kV transmission line.



Existing Condition

Photopoint 189 - 0.6 miles northwest of County Road 00. Looking northwest.



Proposed Condition

Photopoint 189 - 0.6 miles northwest of County Road 00. Looking northwest.



Existing Condition

Photopoint 77 - Lizzy Pauls Pond picnic area, leaf off condition in winter. 3 miles south of the Dairyland's Alma power plant. Looking west. The existing Dairyland 161 kV transmission line parallels the railroad 0.25 miles west of the Great River Road.



Proposed Condition

Photopoint 77 - Lizzy Pauls Pond picnic area, leaf off condition in winter. 3 miles south of the Dairyland's Alma power plant. Looking west. The existing Dairyland 161 kV transmission line would be rebuilt as a double-circuit 161kV / 345kV transmission line.



Existing Condition

Photopoint 77 - Lizzy Pauls Pond picnic area, leave on condition. 3 miles south of Dairyland's Alma power plant. Looking west. The existing Dairyland 161 kV line parallels the railroad 0.25 miles west of Great River Road.



Proposed Condition

Photopoint 77 - Lizzy Pauls Pond picnic area, leave on condition in summer. 3 miles south of Dairyland's Alma power plant. Looking west. The existing Dairyland Q1 161 kV transmission line would be rebuilt as a double-circuit 161 kV / 345 kV transmission line.



Photopoint 190 - Highway 35 at Foegen Road. Looking Southwest.



Photopoint 190 - Highway 35 at Foegen Road. Looking Southwest.



Existing Condition

Photopoint 188 - Highway 35 at Seifert Hill Lane. Looking south. Three existing transmission lines and one distribution line along Great River Road.



Proposed Condition

Photopoint 188 - Highway 35 at Seifert Hill Lane. Looking south. Proposed project crosses the road on the existing 161 kV alignment

Existing Condition



Photopoint 169 - 1 mile north of Cochrane, looking northwest. Existing Dairyland Q1 161kV transmission line parallels the Great River Road.

Proposed Condition



Photopoint 169 - 1 mile north of Cochrane, looking northwest. Existing Dairyland Q1 161kV transmission line would be rebuilt as a double circuit 161 / 345 kV transmission line.



Existing Condition

Photopoint 65 - One-half mile south of Cochrane looking northwest. . The existing Dairyland Q1 161 kV transmission line parallels the Great River Road (WI-35)



Proposed Condition

Photopoint 65 - One-half mile south of Cochrane looking northwest. The existing Dairyland Q1 161 kV transmission line would be removed from the Scenic Easement area on the bluff side of the GRR and rebuilt as a double-circuit 161 / 345 kV transmission on the River side of the GRR where no scenic easements exist.



Photopoint 191 - 0.25 mile southwest of Wisconsin St., Cochrane. Looking Southwest. Three existing transmission lines along Great River Road: 161 kV on far left, 69 kV on left side of road, 69 kV on far right.



Photopoint 191 - 0.25 mile southwest of Wisconsin St., Cochrane. Looking Southwest. The existing Dairyland Q1 161 kV transmission line would be removed from the Scenic Easement area on the bluff side of the GRR and rebuilt as a double-circuit 161 / 345 kV transmission line on the River side of the GRR where no scenic easements exist. In the distance, the route follows the railroad and would remove existing transmission lines from the GRR.



Existing Condition

Photopoint 166 - 1.5 miles south of Cochrane, looking northwest. Three transmission lines parallel Great River Road: Xcel 69kV, Dairyland 69 kV and Dairyland 161 kV.



Proposed Condition

Photopoint 166 - 1.5 miles south of Cochrane, looking northwest. Proposed 345 kV line and existing Dairyland 161 kV consolidated west of road with existing Xcel 69 kV. Dairyland 69 kV removed. The proposed consolidates all transmission lines along the Great River Road.

Existing Condition



Photopoint 79 - View looking west from Cochrane / Fountain City High School. Leaf off condition in winter. The existing Dairyland Q-1 161 kV line parallels the Great River Road (WI-35).

Proposed Condition



Photopoint 79 - View looking west from Cochrane / Fountain City High School. Leaf off condition in winter. The existing Dairyland 161 kV line would be moved 0.5 miles west of Great River Road along a railroad track and consolidated with a proposed 345 kV line.



Existing Condition

Photopoint 79 - View looking west from Cochrane / Fountain City High School. Leaf on condidion in summer. The existing Dairyland Q-1 161kV line parallels the Great River Road (WI-35)



Proposed Condition

Photopoint 79 - View looking west from Cochrane / Fountain City High School. Leaf on condidion in summer. The existing 161kV line would be moved 0.5 miles west of Great River Road along a railroad track and consolidated with proposed 345 kV line.



Photopoint 163 - 3.0 miles north of Fountain City at Indian Creek Road. Looking northwest. Existing 161 kV line crosses the Great River Road 1.0 mile north of this location and out of view in this photo.



Photopoint 163 - 3.0 miles north of Fountain City at Indian Creek Road. Looking northwest. As part of removing 3.1 miles of existing 161 kV line from scenic easement, the 345 / 161 kV line crossing is moved to this location.



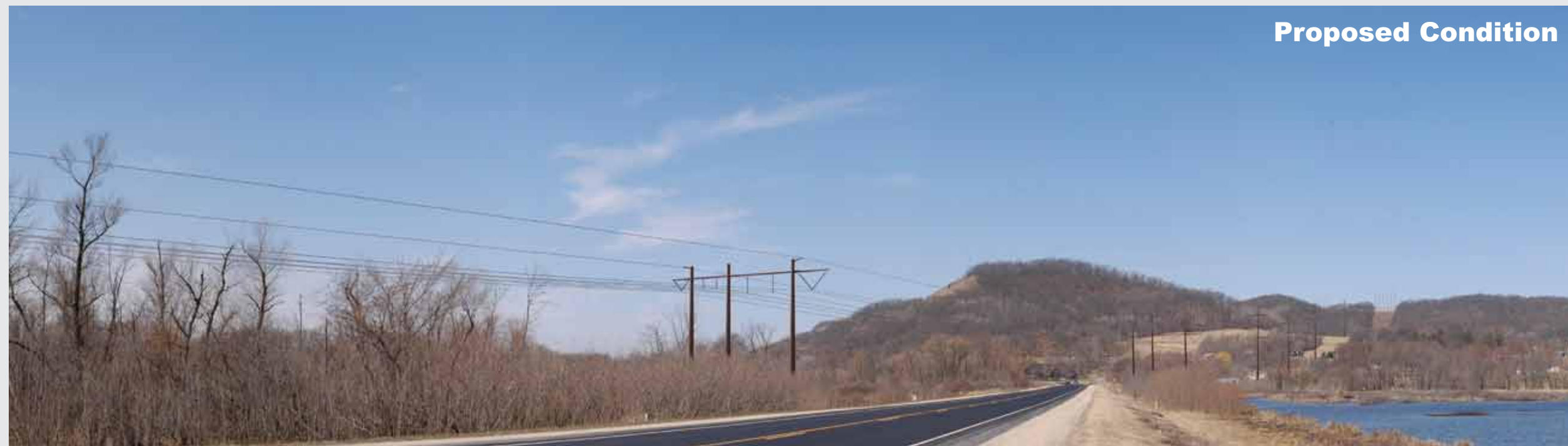
Photopoint 192 - 0.4 miles east of Trempealeau River. Looking west. Existing 161 kV line crosses road.



Photopoint 192 - 0.4 miles east of Trempealeau River. Looking west. H-frames requested by WisDOT to reduce height and visual impact. Also see Photopoint 64.



Photopoint 64 - Trempealeau River Bridge east of Marshland. Leaf off condition in winter. Looking West. Existing Dairyland 161 kV line parallels Great River Road (WI-35) and ascends the bluff.



Photopoint 64 - Trempealeau River Bridge east of Marshland. Leaf off condition in winter. Looking West. Existing Dairyland 161 kV line rebuilt to 345/161 kV double circuit. Shorter H-frame poles reduce visual impacts of road crossing.



Existing Condition

Photopoint 64 - Trempealeau River Bridge east of Marshland. Leaf on condition in winter. Looking West. Existing Dairyland 161 kV line parallels Great River Road (WI-35) and ascends the bluff.



Proposed Condition

Photopoint 64 - Trempealeau River Bridge east of Marshland. Leaf on condition in winter. Looking West. Existing Dairyland 161 kV line rebuilt to 345/161 kV double circuit. Shorter H-frame poles reduce visual impacts of road crossing.



Photopoint 160 - 1.5 miles north of Village of Trempealeau. Looking south. The existing Dairyland Q1 161 kV transmission line crosses the Great River Road (WIS 35).

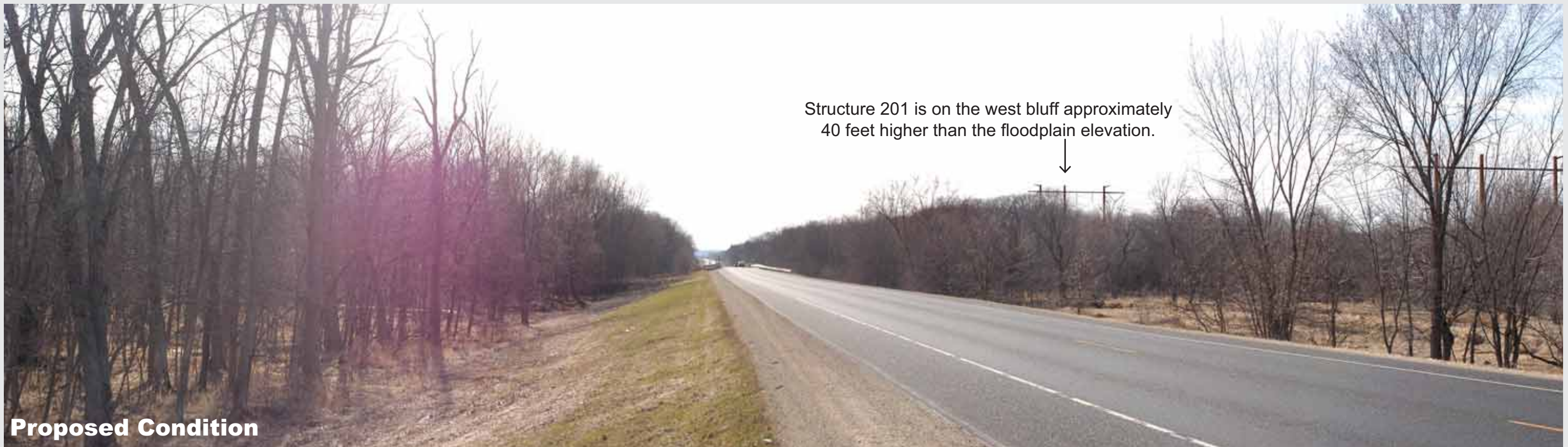


Photopoint 160 - 1.5 miles north of Village of Trempealeau. Looking south. The existing Dairyland Q1 161 kV transmission line would be rebuilt to a double-circuit 161 kV / 345 kV transmission line.



Existing Condition

Photopoint 93 - Great River Road 1.0 mile east of Black River, looking east.



Structure 201 is on the west bluff approximately 40 feet higher than the floodplain elevation.



Proposed Condition

Photopoint 93 - Great River Road 1.0 mile east of Black River, looking east. 345 / 161 kV line constructed on low profile H-frame structures 350 feet north (right) of road.



Existing Condition

Photopoint 154 - Great River Road (Wis 35) 0.25 mile west of US 53 / WIS 35 interchange. Looking southeast.



Proposed Condition

Photopoint 154 - Great River Road (Wis 35) 0.25 mile west of US 53 / WIS 35 interchange. Looking southeast. Proposed 345 / 161 kV line.



Existing Condition

Photopoint 153 - Briggs Road overpass over US 53. Looking Northwest.



Proposed Condition

Photopoint 153 - Briggs Road overpass over US 53. Looking Northwest. Proposed 345 / 161 kV.