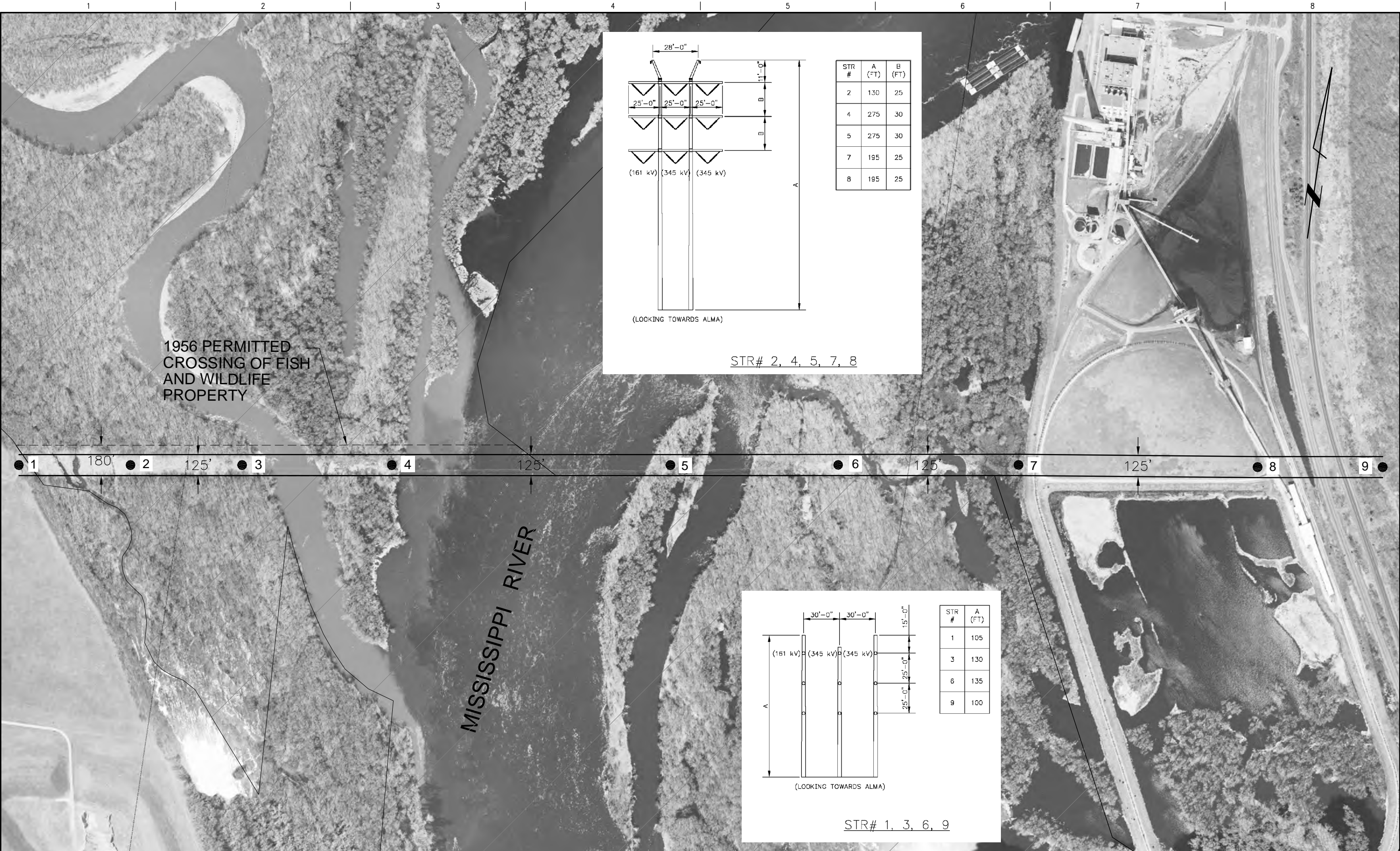
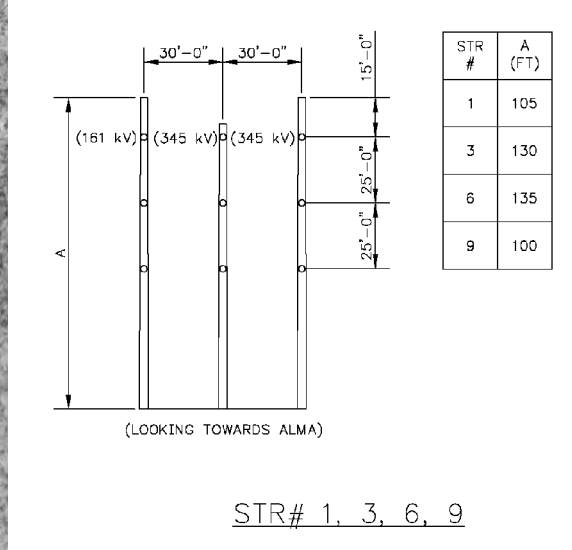
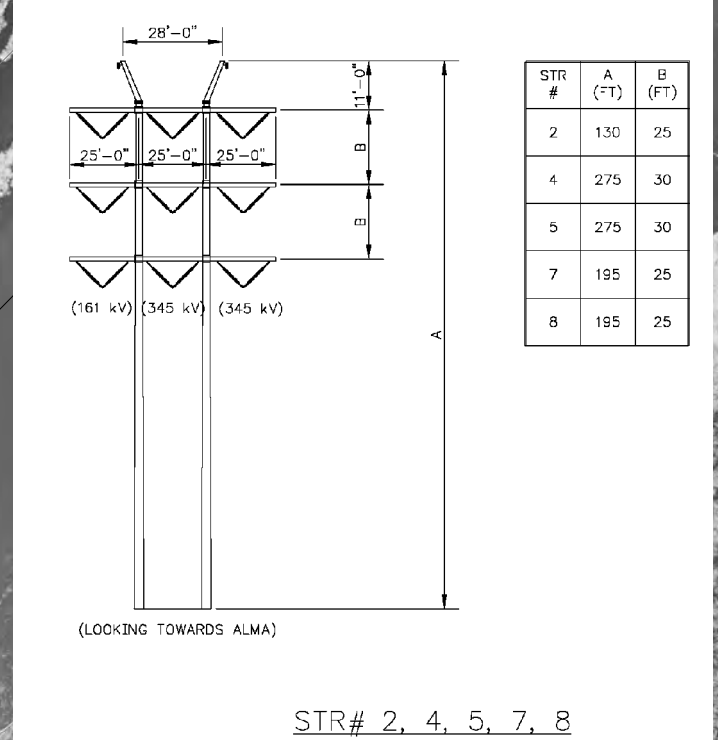


Appendix M – Transmission Configuration Options –
Mississippi River Crossing



1956 PERMITTED
CROSSING OF FISH
AND WILDLIFE
PROPERTY



MISSISSIPPI RIVER

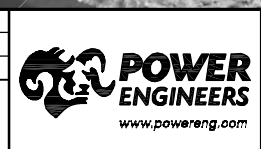
THIS DRAWING WAS PREPARED BY POWER ENGINEERS, INC. FOR A SPECIFIC PROJECT. TAKING INTO CONSIDERATION THE SPECIFIC AND UNIQUE REQUIREMENTS OF THE PROJECT, REUSE OF THIS DRAWING OR ANY INFORMATION CONTAINED IN THIS DRAWING FOR ANY PURPOSE IS PROHIBITED UNLESS WRITTEN PERMISSION FROM BOTH POWER AND POWER'S CLIENT IS GRANTED.

NOTE:
1. REFER TO DWG PO-1-1 FOR PLAN & PROFILE VIEW.
2. CROSS HATCH INDICATES FISH & WILDLIFE PROPERTY.

REV	ISSUED FOR REVIEW	DATE	DRN	DSGN	CKD	APPD	REFERENCE DRAWINGS
A	ISSUED FOR REVIEW	12/16/09	BW	PG	RC		

DSGN	PG	DATE
DRN	BW	12/16/09
CKD	RC	12/16/09

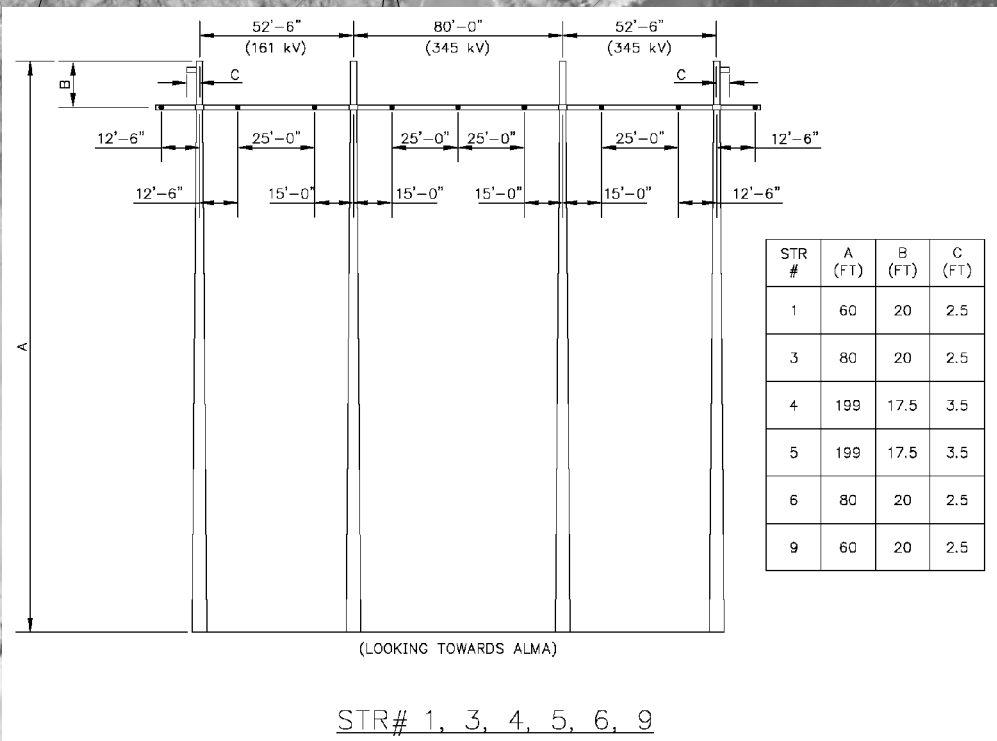
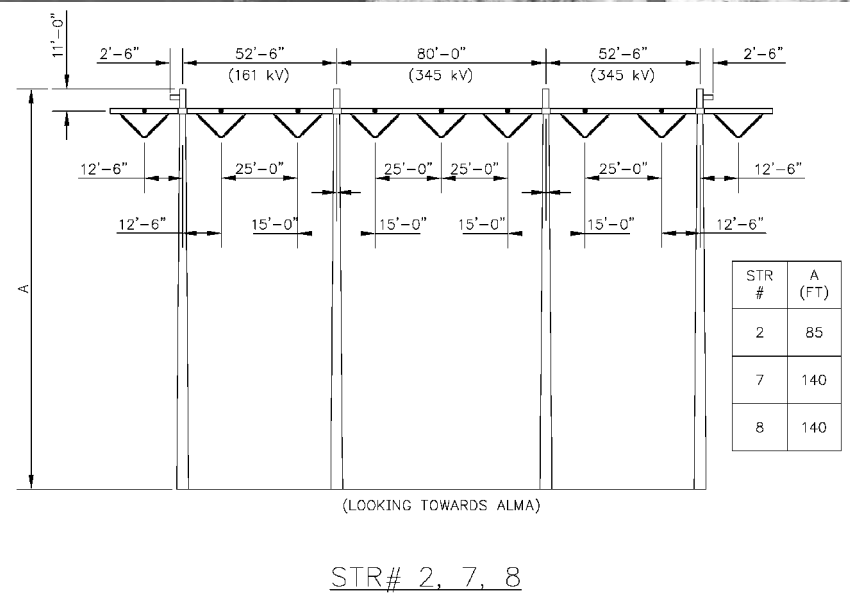
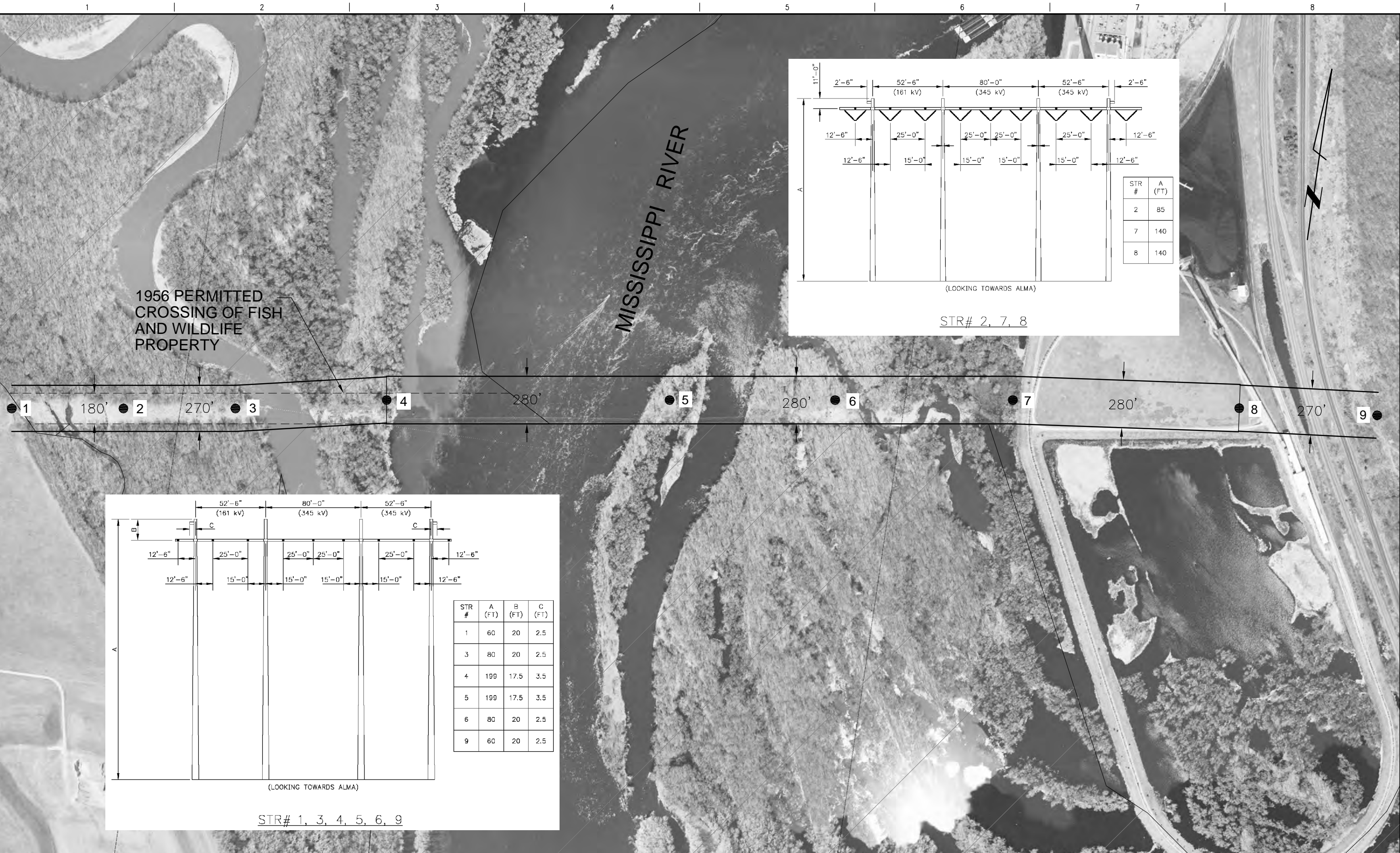
SCALE: NTS
FOR 11x17 DWG ONLY



XCEL ENERGY
MISSISSIPPI CROSSING NEAR ALMA
345/345/161 kV CROSSING
ROW PLAN VIEW
OPTION A

JOB NUMBER	REV
113642	A

DRAWING NUMBER
P0-1-2



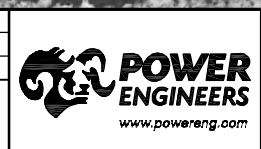
THIS DRAWING WAS PREPARED BY POWER ENGINEERS, INC. FOR A SPECIFIC PROJECT, TAKING INTO CONSIDERATION THE SPECIFIC AND UNIQUE REQUIREMENTS OF THE PROJECT. REUSE OF THIS DRAWING OR ANY INFORMATION CONTAINED IN THIS DRAWING FOR ANY PURPOSE IS PROHIBITED UNLESS WRITTEN PERMISSION FROM BOTH POWER AND POWER'S CLIENT IS GRANTED.

NOTE:
 1. REFER TO DWG P0-2-1 FOR PLAN & PROFILE VIEW.
 2. CROSS HATCH INDICATES FISH & WILDLIFE PROPERTY.

REV	ISSUED FOR REVIEW	DATE	DRN	DSGN	CKD	APPD	REFERENCE DRAWINGS
A	ISSUED FOR REVIEW	12/16/09	BW	PG	RC		

DSGN	PG	DATE
DRN	BW	12/16/09
CKD	RC	12/16/09

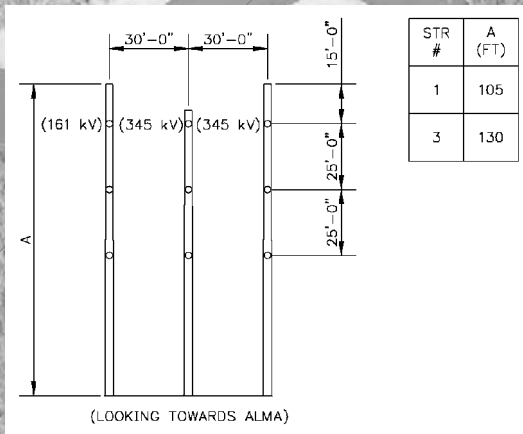
SCALE: NTS
FOR 11x17 DWG ONLY



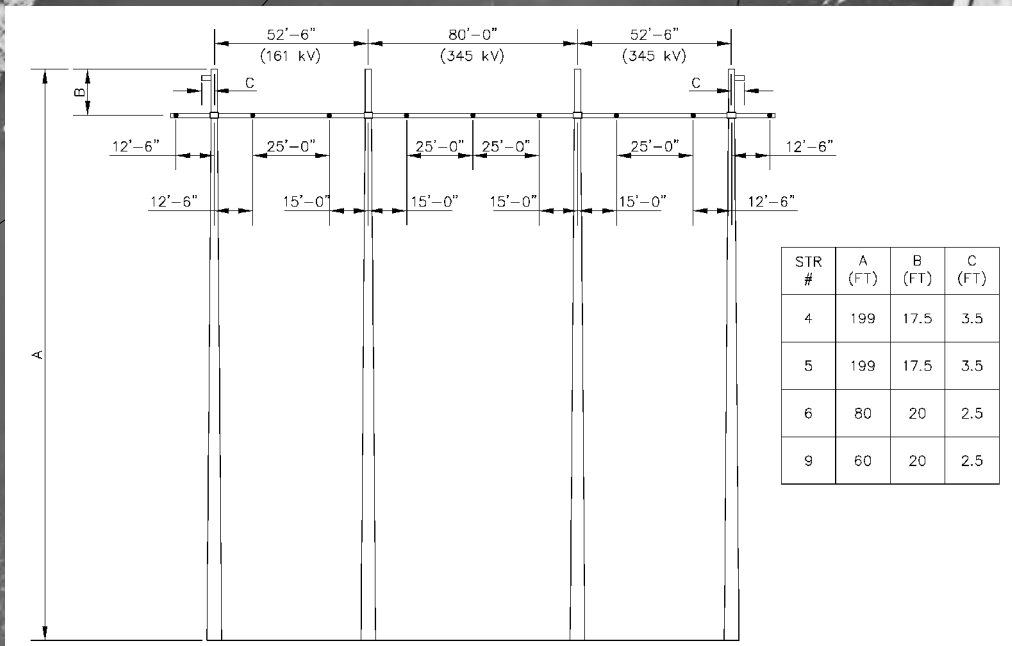
XCEL ENERGY
 MISSISSIPPI CROSSING NEAR ALMA
 345/345/161 kV CROSSING
 PLAN AND PROFILE
 OPTION B

JOB NUMBER	REV
113642	A

DRAWING NUMBER
P0-2-2

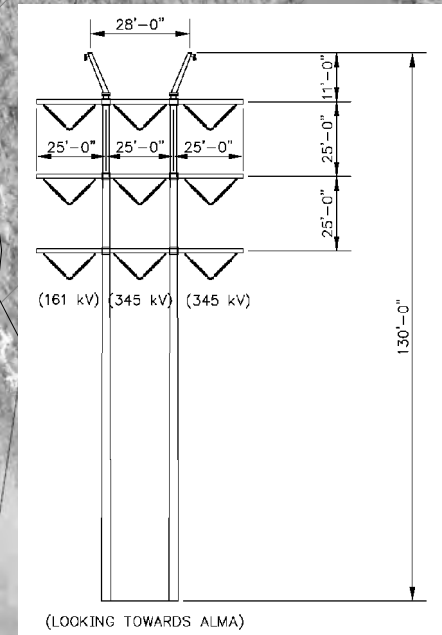


STR# 1, 3

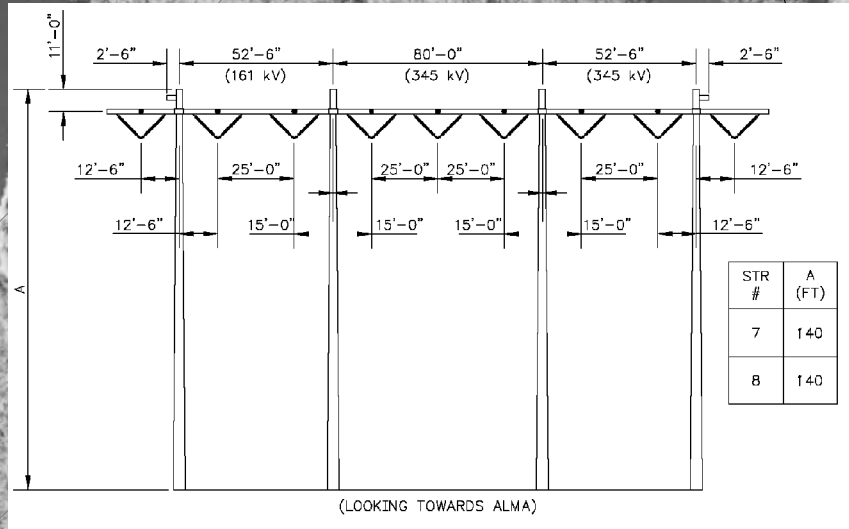


STR# 4, 5, 6, 9

1956 PERMITTED CROSSING OF FISH AND WILDLIFE PROPERTY



STR# 2



STR# 7, 8

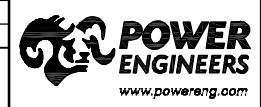
MISSISSIPPI RIVER

THIS DRAWING WAS PREPARED BY POWER ENGINEERS, INC. FOR A SPECIFIC PROJECT, TAKING INTO CONSIDERATION THE SPECIFIC AND UNIQUE REQUIREMENTS OF THE PROJECT. REUSE OF THIS DRAWING OR ANY INFORMATION CONTAINED IN THIS DRAWING FOR ANY PURPOSE IS PROHIBITED UNLESS WRITTEN PERMISSION FROM BOTH POWER AND POWER'S CLIENT IS GRANTED.

NOTE:
 1. REFER TO DWG P0-3-1 FOR PLAN & PROFILE VIEW.
 2. CROSS HATCH INDICATES FISH & WILDLIFE PROPERTY.

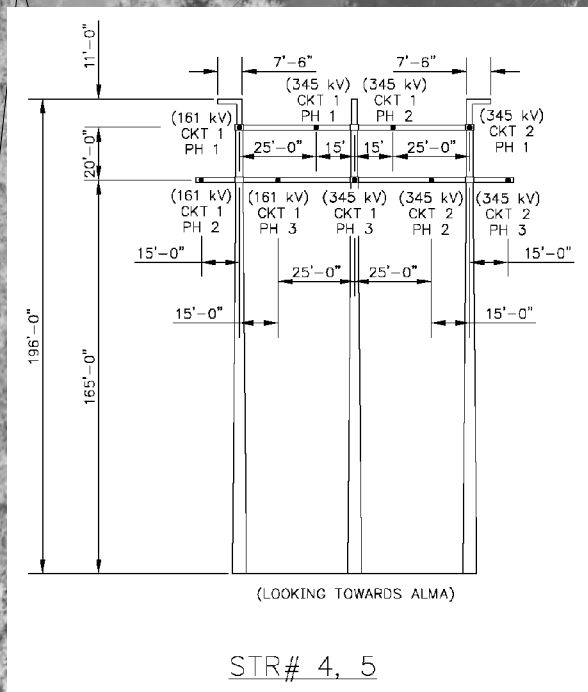
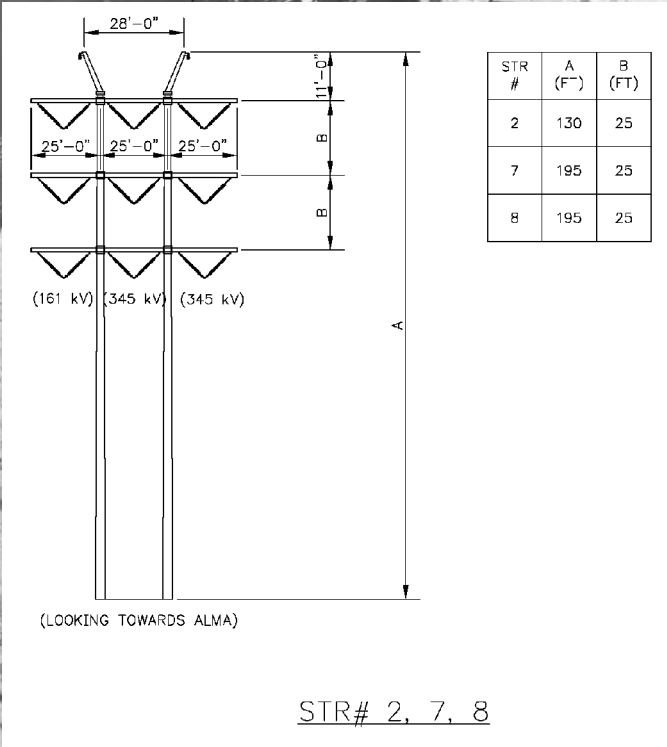
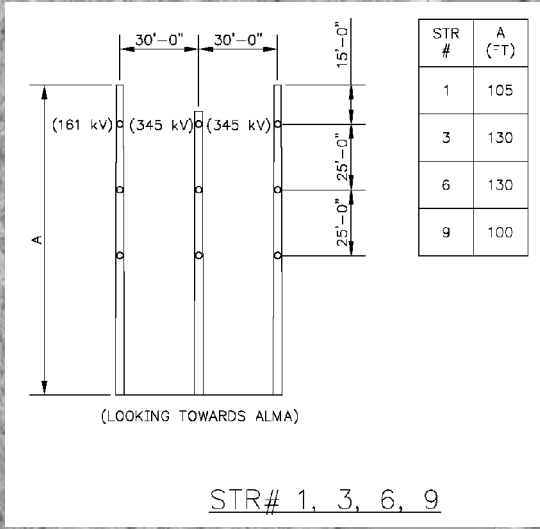
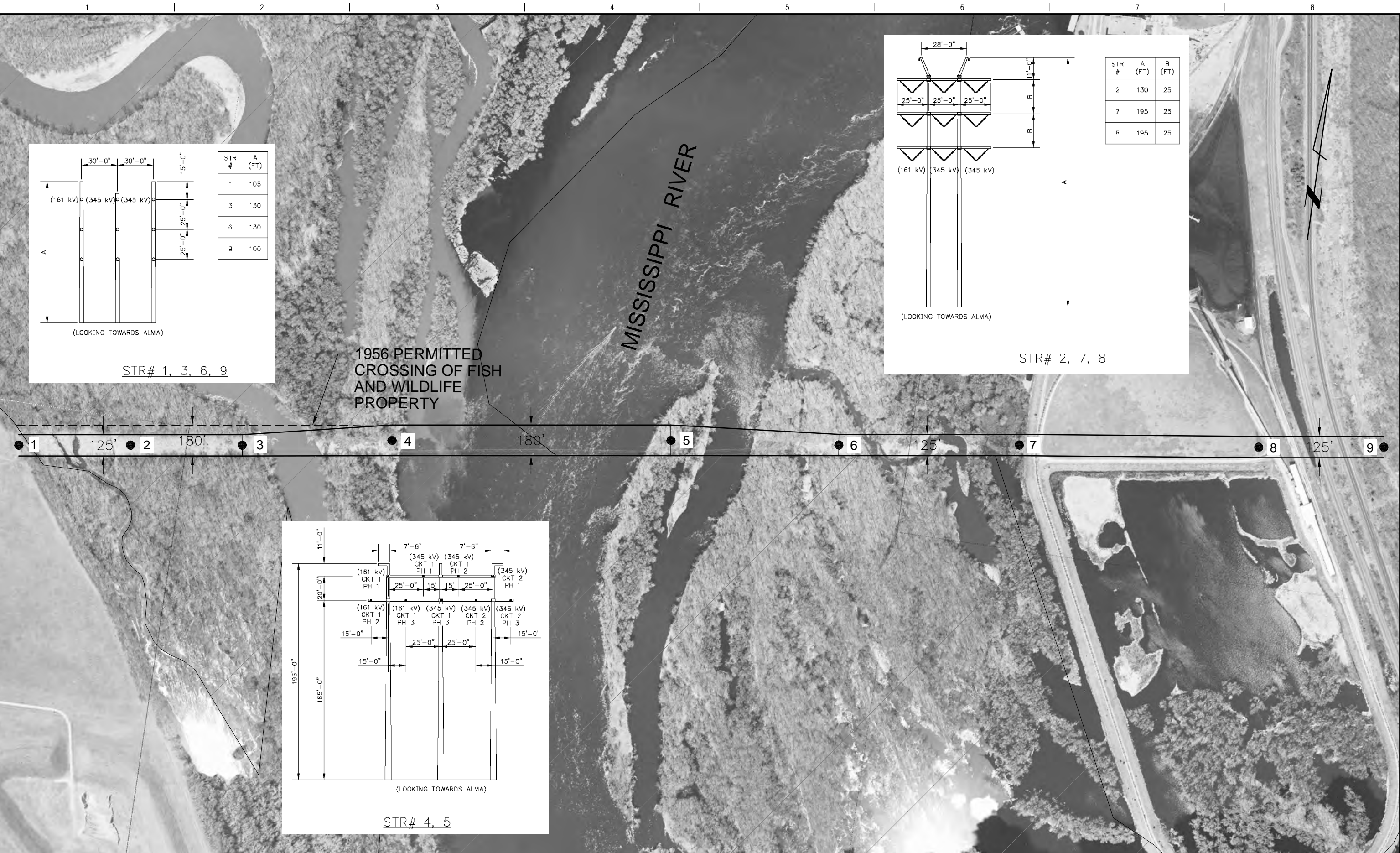
REV	A	ISSUED FOR REVIEW	12/16/09	BW	PG	RC						
		REVISIONS	DATE	DRN	DSGN	CKD	APPD		REFERENCE DRAWINGS			

DSGN	PG	12/16/09
DRN	BW	12/16/09
CKD	RC	12/16/09
SCALE:	NTS	
FOR 11x17 DWG ONLY		



XCEL ENERGY
 MISSISSIPPI CROSSING NEAR ALMA
 345/345/161 kV CROSSING
 PLAN AND PROFILE
 OPTION C

JOB NUMBER	REV
113642	A
DRAWING NUMBER	
P0-3-2	



THIS DRAWING WAS PREPARED BY POWER ENGINEERS, INC. FOR A SPECIFIC PROJECT. TAKING INTO CONSIDERATION THE SPECIFIC AND UNIQUE REQUIREMENTS OF THE PROJECT, REUSE OF THIS DRAWING OR ANY INFORMATION CONTAINED IN THIS DRAWING FOR ANY PURPOSE IS PROHIBITED UNLESS WRITTEN PERMISSION FROM BOTH POWER AND POWER'S CLIENT IS GRANTED.

NOTE:
 1. REFER TO DWG PO-4-1 FOR PLAN & PROFILE VIEW.
 2. CROSS HATCH INDICATES FISH & WILDLIFE PROPERTY.

REV	REVISIONS	DATE	DRN	DSGN	CKD	APPD	REFERENCE DRAWINGS
A	ISSUED FOR REVIEW	12/16/09	BW	PG	RC		

DSGN	PG	12/16/09
DRN	BW	12/16/09
CKD	RC	12/16/09
SCALE:	NTS	
FOR 11x17 DWG ONLY		



XCEL ENERGY
 MISSISSIPPI CROSSING NEAR ALMA
 345/345/161 kV CROSSING
 ROW PLAN VIEW
 OPTION D

JOB NUMBER	REV
113642	A
DRAWING NUMBER	
PO-4-2	