

Bar: Footer: Date: 9/7/2010 8:17:11 AM File: I:\Projects\2362104\1\Maps\Reports\Scoping\_Report\Scoping\_Rpt\_Map\_Index.mxd User: amm

### Index to Figures

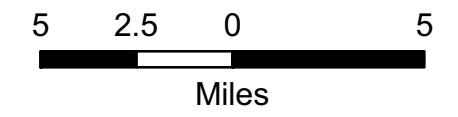
- Figure 2
- Figure 3
- Figure 4
- Figure 5
- Figure 6
- Figure 7
- Figure 8
- Figures 9, 10 & 11
- Figure 12
- Figure 13
- Figure 14

### Applicant's 345 kV

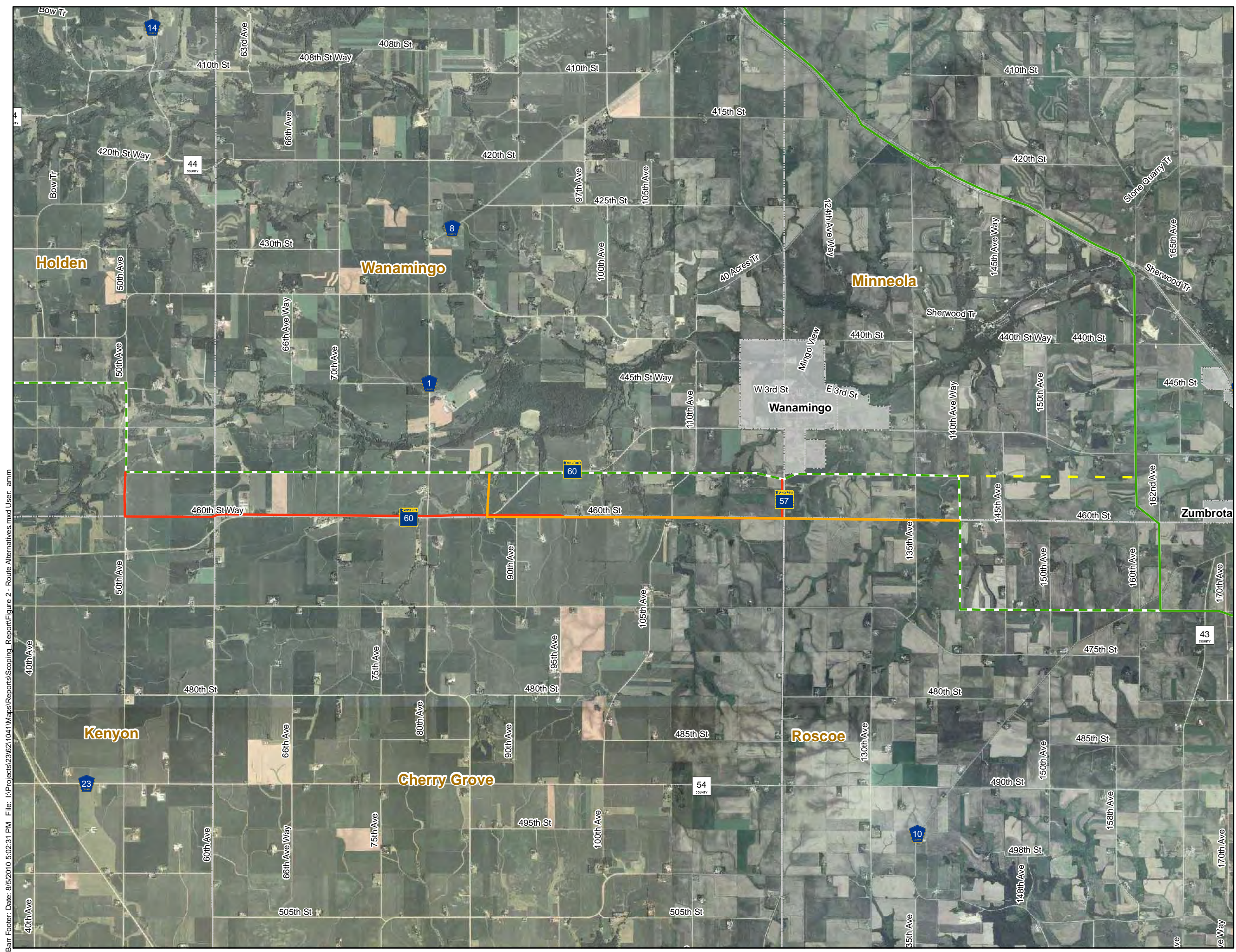
- Preferred/Both
- Alternative
- Dam Option

### Applicant's 161kV

- Preferred/Both
- Alternative
- Proposed Substation Locations
- Townships
- Municipality



Extents of Figures 9, 10 & 11 are identical.



**Applicant's 345 kV**

- Preferred/Both
- - - Alternative
- Dam Option

**Applicant's 161kV**

- Preferred/Both
- - - Alternative
- Proposed Substation Locations

**Route Alternatives**

- 1A-001
- 1A-004
- - - 1B-003
- Townships
- Municipality

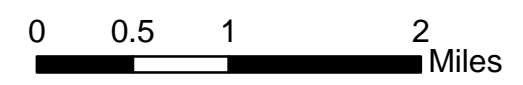
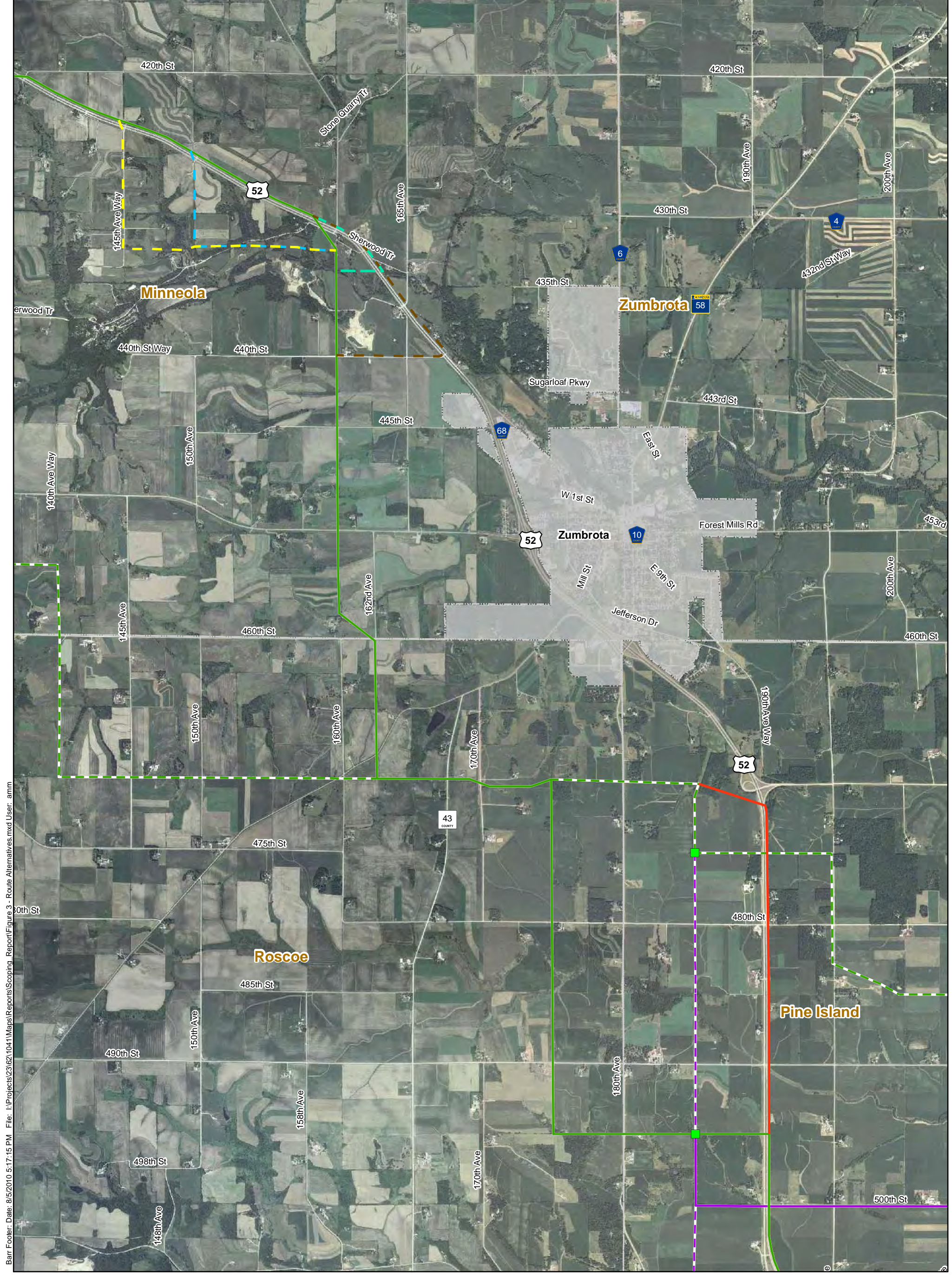


Figure 2

Route Alternatives Map 1 of 10  
 CapX2020  
 Hampton - Rochester - LaCrosse  
 345 kV Transmission Project



Barr Footer: Date: 8/5/2010 5:17:15 PM File: I:\Projects\23162\1041\Maps\Reports\Scoping\_Report\Figure 3 - Route Alternatives.mxd User: ammm

- |   |   |  |   |  |
|---|---|--|---|--|
| <b>Applicant's 345 kV</b>                             |   | <span style="color: green;">■</span> Proposed Substation Locations | <b>Route Alternatives</b>                       |  |
| <span style="color: green;">—</span> Preferred/Both   | <span style="border: 1px dashed black; display: inline-block; width: 10px; height: 10px;"></span> Townships                           | <span style="color: red;">—</span> 1B-001                          | <span style="color: blue;">- - -</span> 1P-004  |  |
| <span style="color: green;">- - -</span> Alternative  | <span style="background-color: grey; border: 1px solid black; display: inline-block; width: 10px; height: 10px;"></span> Municipality | <span style="color: yellow;">- - -</span> 1P-005                   | <span style="color: green;">- - -</span> 1P-006 |  |
| <span style="color: green;">●</span> Dam Option       |   | <span style="color: brown;">- - -</span> 1P-007                    |   |  |
| <b>Applicant's 161kV</b>                              |   |  |   |  |
| <span style="color: purple;">—</span> Preferred/Both  |   |  |   |  |
| <span style="color: purple;">- - -</span> Alternative |   |  |   |  |

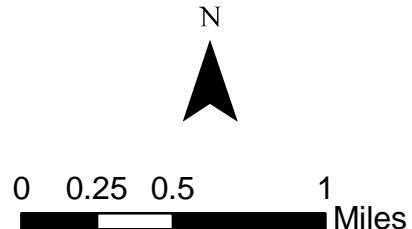
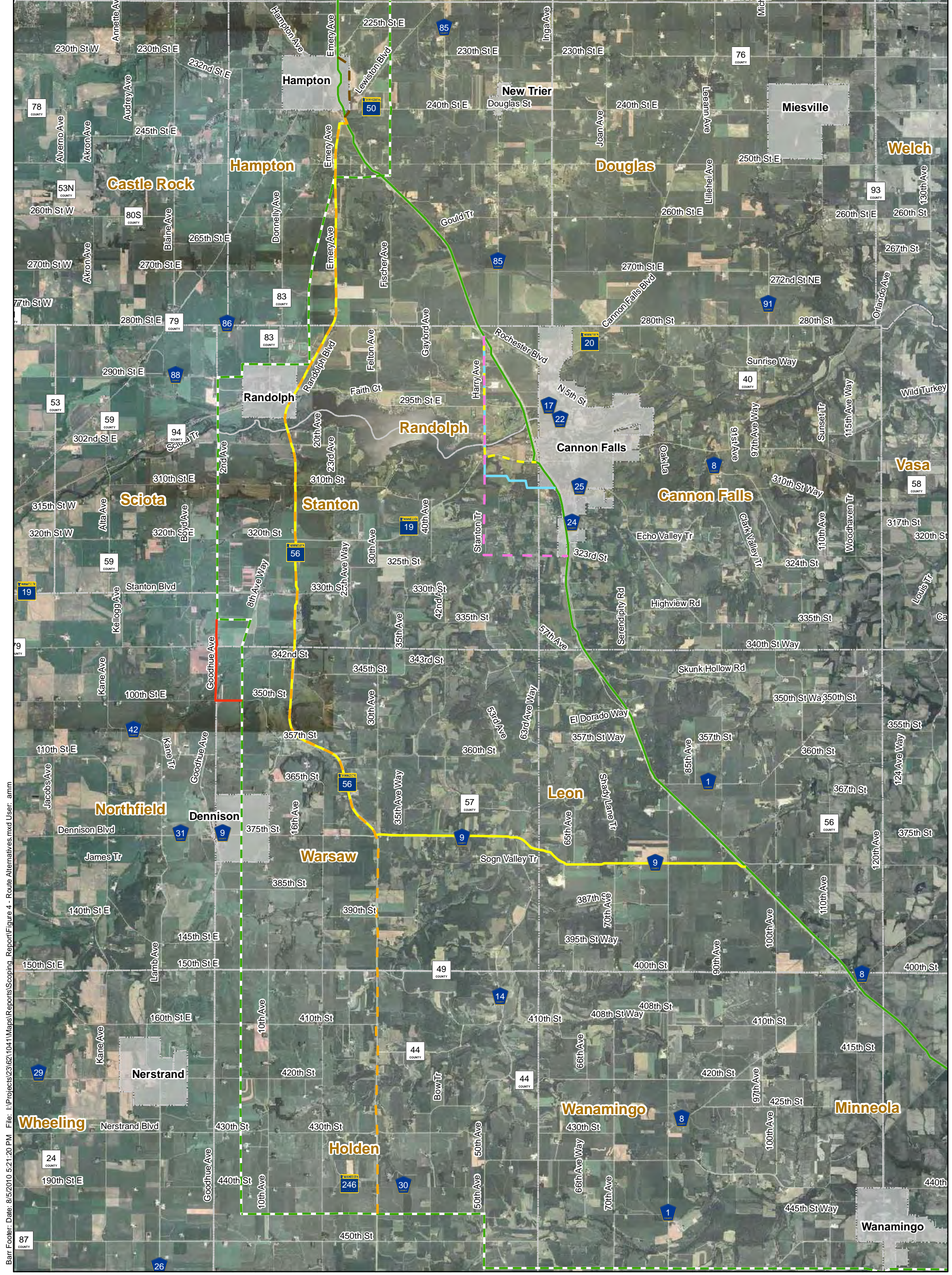


Figure 3  
 Route Alternatives Map 2 of 10  
 CapX2020  
 Hampton - Rochester - LaCrosse  
 345 kV Transmission Project



Bart Footer: Date: 8/5/2010 5:21:20 PM File: I:\Projects\23162\1041\Map\Reports\Scoping\_Report\Figure 4 - Route Alternatives.mxd User: ammm

- |  |  |  |  |  |
|--|--|--|--|--|
| <b>Applicant's 345 kV</b>                              |  | <ul style="list-style-type: none"> <li><span style="color: green;">■</span> Proposed Substation Locations</li> <li><span style="border: 1px dashed gray; display: inline-block; width: 15px; height: 10px;"></span> Townships</li> <li><span style="border: 1px solid gray; display: inline-block; width: 15px; height: 10px;"></span> Municipality</li> </ul> | <b>Route Alternatives</b>                    |  |
| <span style="color: green;">—</span> Preferred/Both    | <span style="color: green;">- - -</span> Alternative |  | <span style="color: red;">—</span> 1A-003    | <span style="color: orange;">—</span> 1B-005 |
| <span style="color: green;">●</span> Dam Option        |  | <span style="color: cyan;">—</span> 1P-001   | <span style="color: yellow;">—</span> 1P-002 |  |
| <b>Applicant's 161kV</b>                               |  | <span style="color: magenta;">—</span> 1P-003  | <span style="color: brown;">—</span> 1P-008  |  |
| <span style="color: magenta;">—</span> Preferred/Both  |  | <span style="color: yellow;">—</span> 1P-009   |  |  |
| <span style="color: magenta;">- - -</span> Alternative |  |  |  |  |

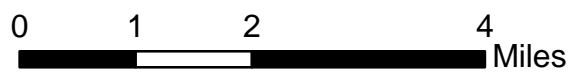
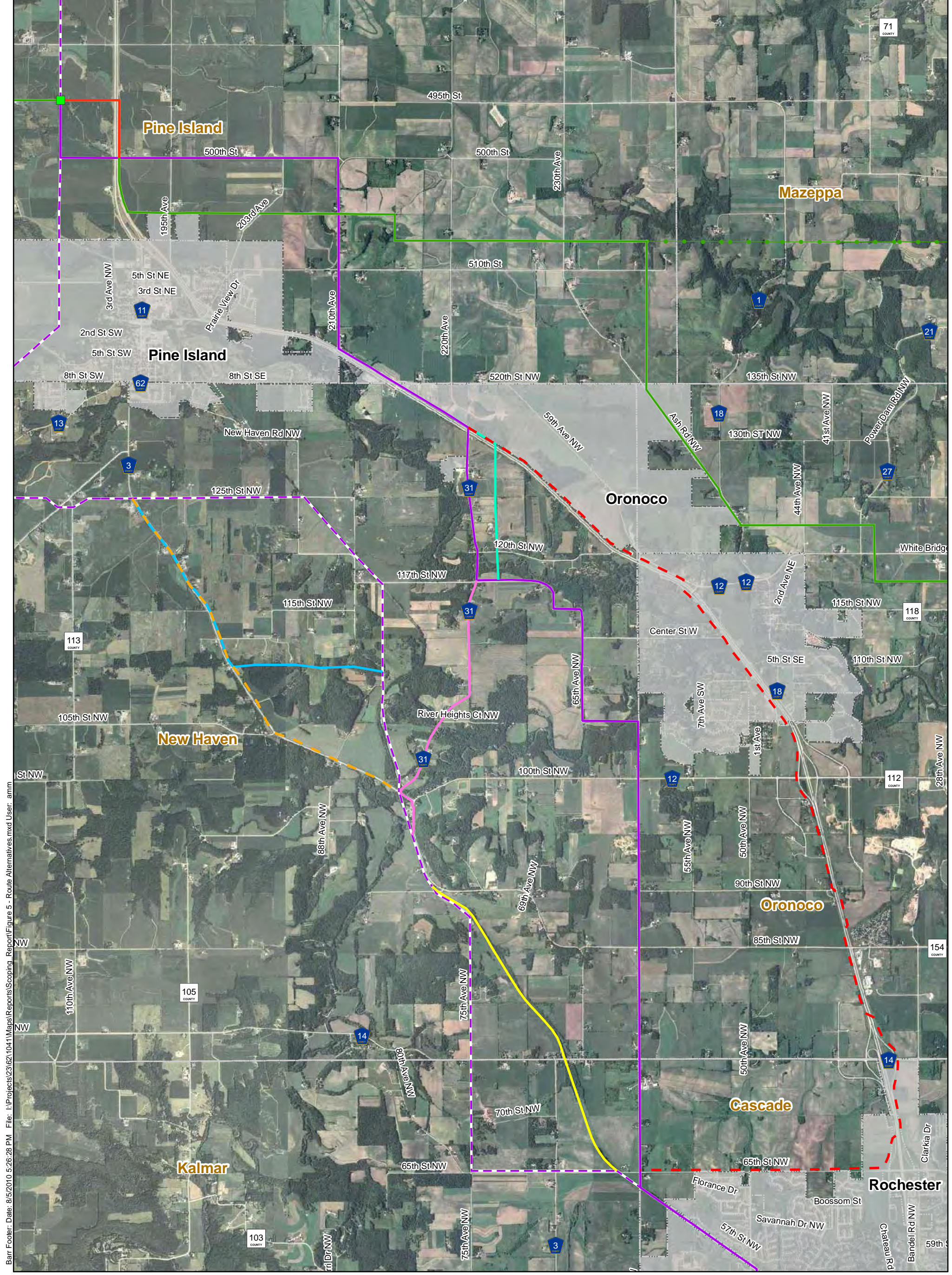


Figure 4

Route Alternatives Map 3 of 10  
 CapX2020  
 Hampton - Rochester - LaCrosse  
 345 kV Transmission Project



Barr Footer: Date: 8/5/2010 5:26:28 PM File: I:\Projects\231621041\Map\Reports\Scoping\_Report\Figure 5 - Route Alternatives.mxd User: ammm

- |   |  |   |
|---|--|---|
| <p><b>Applicant's 345 kV</b></p> <ul style="list-style-type: none"> <li><span style="color: green;">—</span> Preferred/Both</li> <li><span style="color: green;">- - -</span> Alternative</li> <li><span style="color: green;">●—●</span> Dam Option</li> </ul> <p><b>Applicant's 161kV</b></p> <ul style="list-style-type: none"> <li><span style="color: purple;">—</span> Preferred/Both</li> <li><span style="color: purple;">- - -</span> Alternative</li> </ul> | <p><b>Proposed Substation Locations</b></p> <ul style="list-style-type: none"> <li><span style="color: green;">■</span></li> </ul> <p><b>Townships</b></p> <ul style="list-style-type: none"> <li><span style="border: 1px dashed gray; display: inline-block; width: 10px; height: 10px;"></span></li> </ul> <p><b>Municipality</b></p> <ul style="list-style-type: none"> <li><span style="border: 1px solid gray; display: inline-block; width: 10px; height: 10px;"></span></li> </ul> | <p><b>Route Alternatives</b></p> <ul style="list-style-type: none"> <li><span style="color: yellow;">—</span> 2A-001</li> <li><span style="color: cyan;">—</span> 2A-002</li> <li><span style="color: orange;">—</span> 2A-003</li> <li><span style="color: magenta;">—</span> 2B-001</li> <li><span style="color: teal;">—</span> 2P-001</li> <li><span style="color: red;">- - -</span> 2P-002</li> <li><span style="color: red;">—</span> 2C3-008</li> </ul> |
|---|--|---|

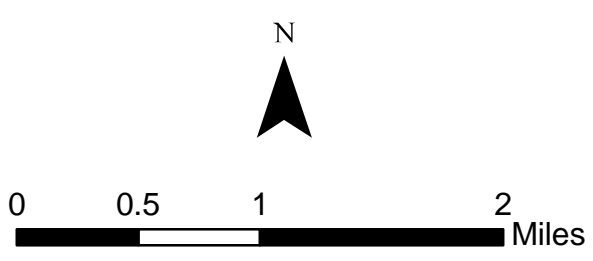
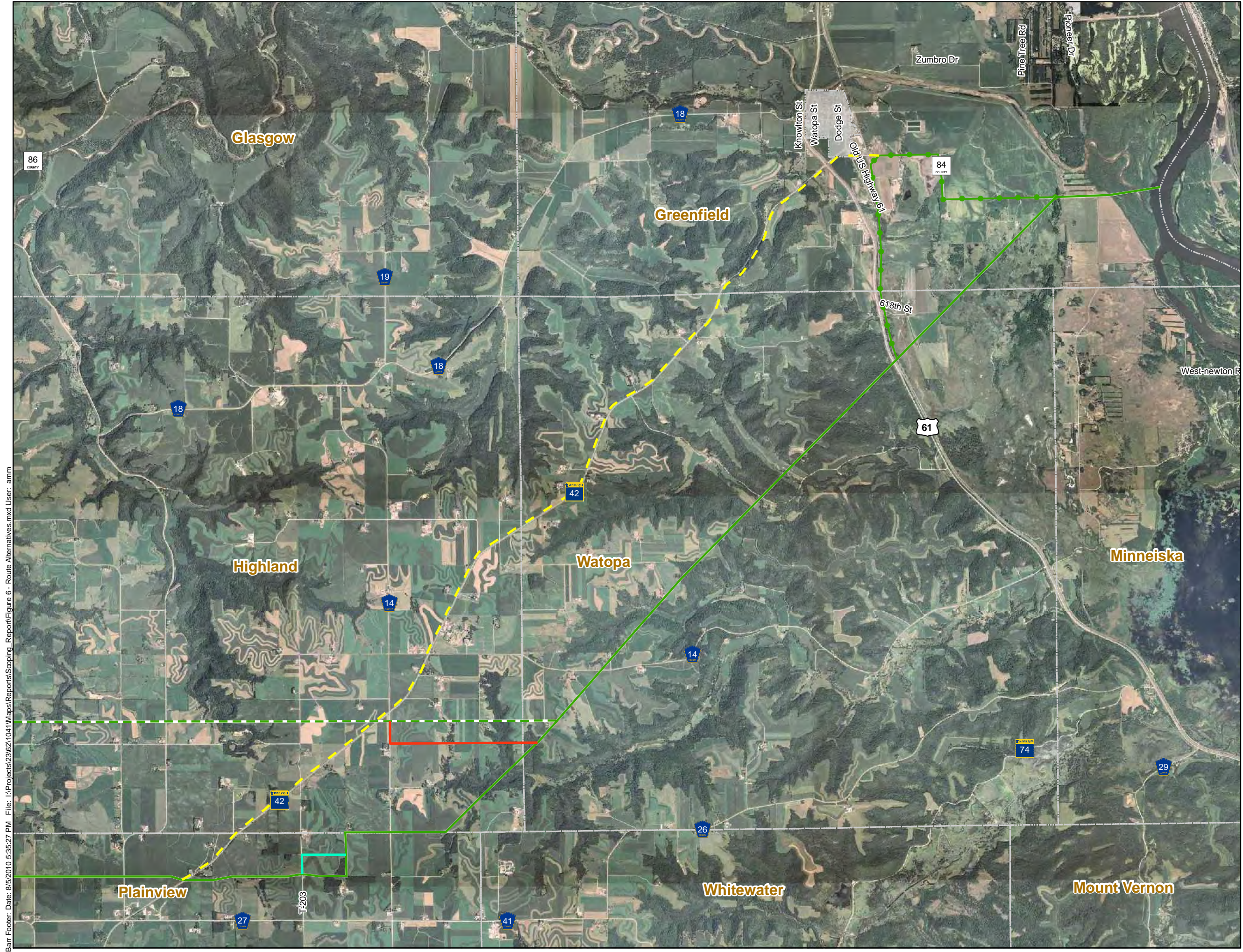


Figure 5  
 Route Alternatives Map 4 of 10  
 CapX2020  
 Hampton - Rochester - LaCrosse  
 345 kV Transmission Project



**Applicant's 345 kV**

- Preferred/Both
- - - Alternative
- Option

**Applicant's 161kV**

- Preferred/Both
- - - Alternative

■ Proposed Substation Locations

**Route Alternative**

- 3A-001
- - - 3B-003
- 3P-004

□ Townships

■ Municipality

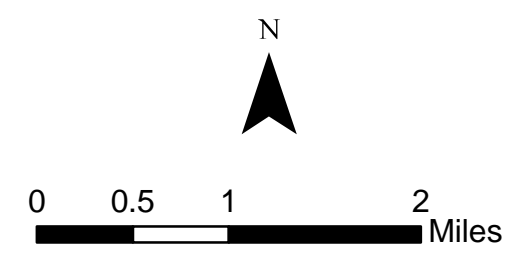
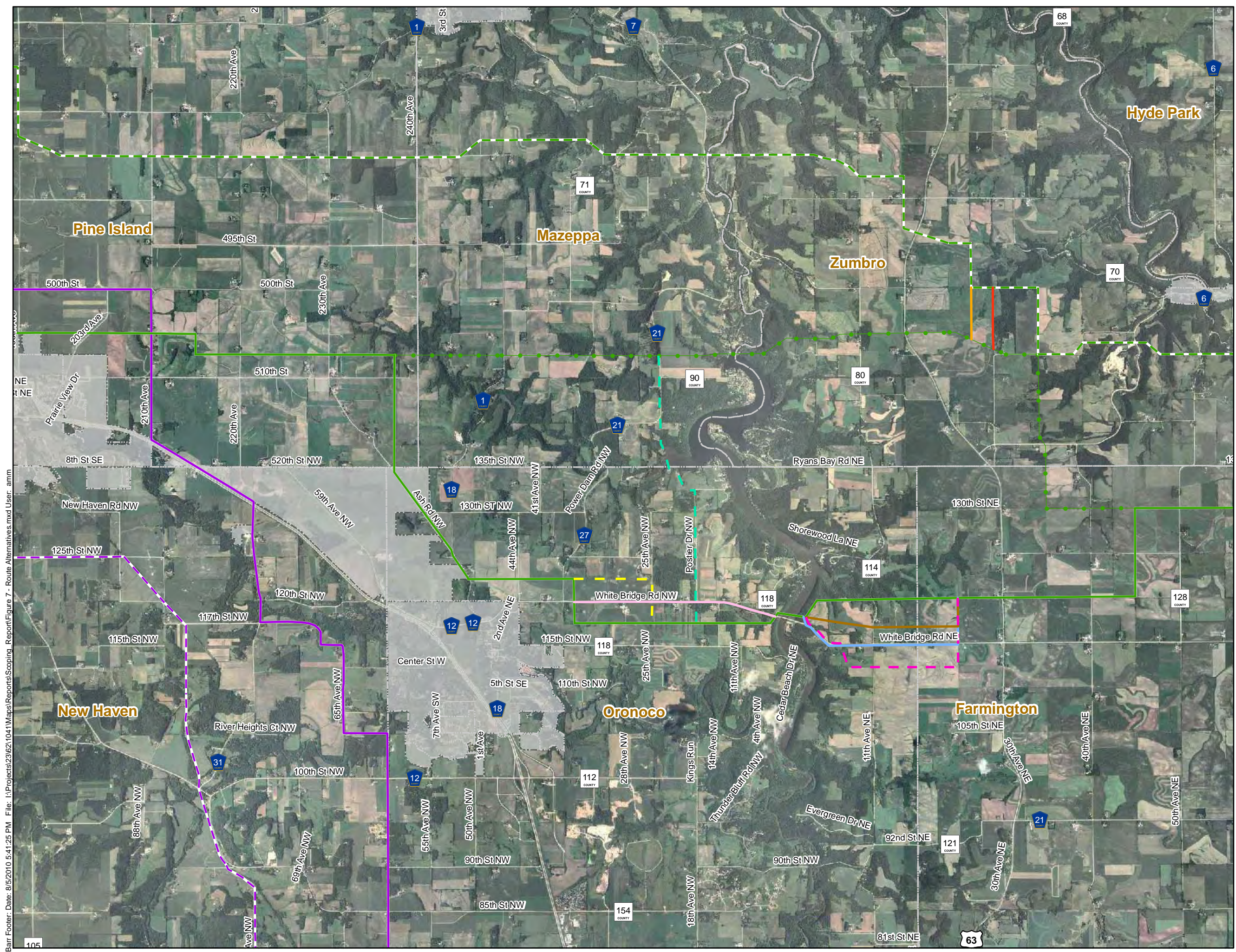


Figure 6  
 Route Alternatives Map 5 of 10  
 CapX2020  
 Hampton - Rochester - LaCrosse  
 345 kV Transmission Project

Barr Footer: Date: 8/5/2010 5:35:27 PM File: I:\Projects\231621041\Maps\Reports\Scoping\_Report\Figure 6 - Route Alternatives.mxd User: ammm



**Applicant's 345 kV**

- Preferred/Both
- - - Alternative
- - ● Dam Option

**Applicant's 161kV**

- Preferred/Both
- - - Alternative

- Proposed Substation Locations

**Route Alternatives**

- 3A-003
- 3A-004
- - - 3P-005
- 3P-006
- - - 3P-007
- - - 3P-009
- 3P-010
- 3P-011

- Townships
- Municipality

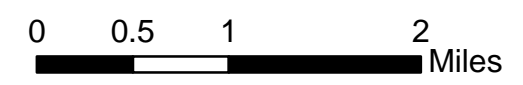
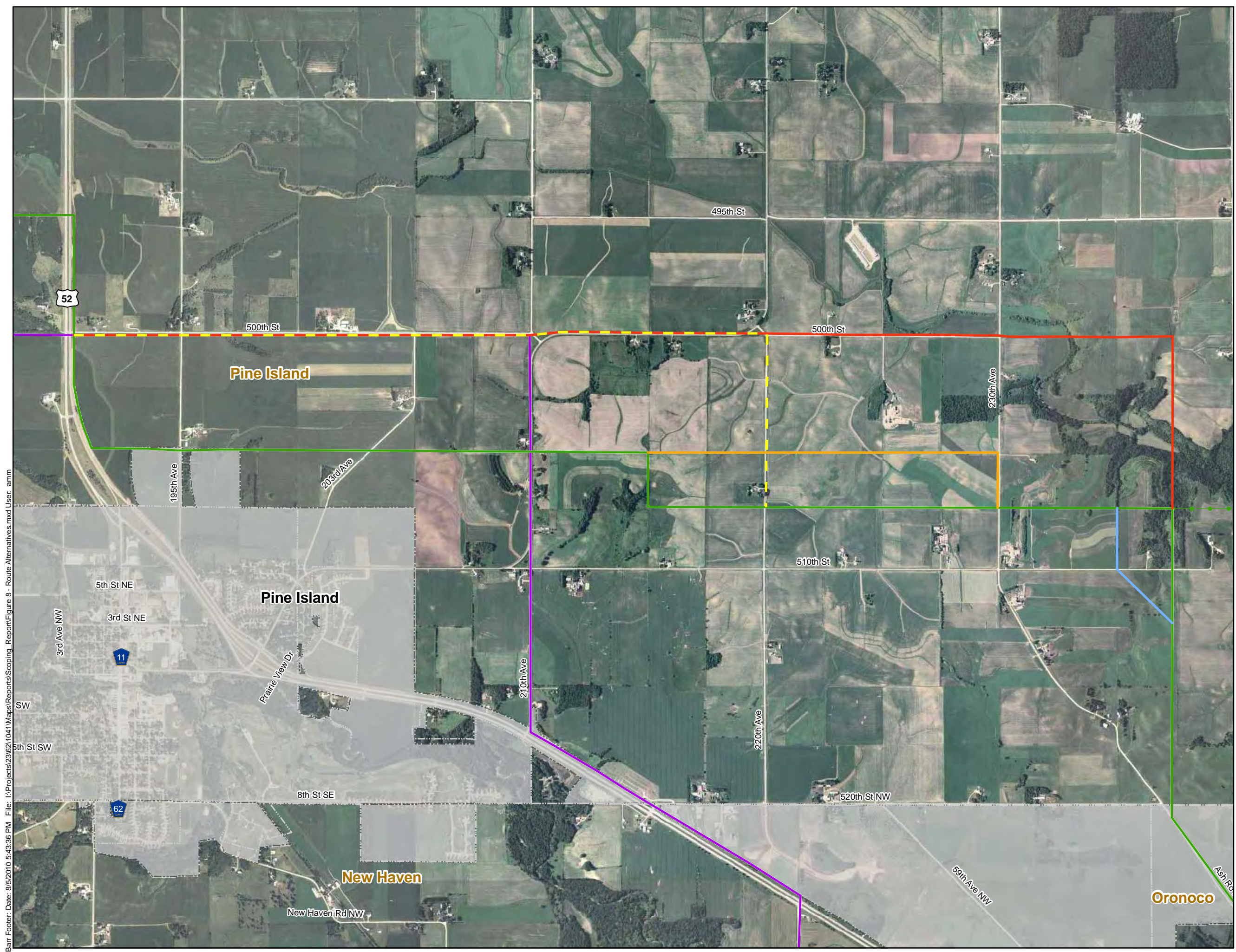


Figure 7

Route Alternatives Map 6 of 10  
 CapX2020  
 Hampton - Rochester - LaCrosse  
 345 kV Transmission Project

Barr Footer: Date: 8/5/2010 5:41:25 PM File: I:\Projects\231621041\Maps\Reports\Scoping\_Report\Figure 7 - Route Alternatives.mxd User: ammm



**Applicant's 345 kV**

- Preferred/Both
- - - Alternative
- Dam Option

**Applicant's 161kV**

- Preferred/Both
- - - Alternative
- Proposed Substation Locations

**Route Alternatives**

- 3P-001
- 3P-002
- - - 3P-003
- 3P-008

- Townships
- Municipality

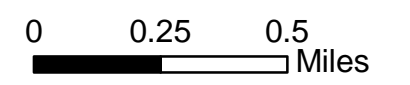
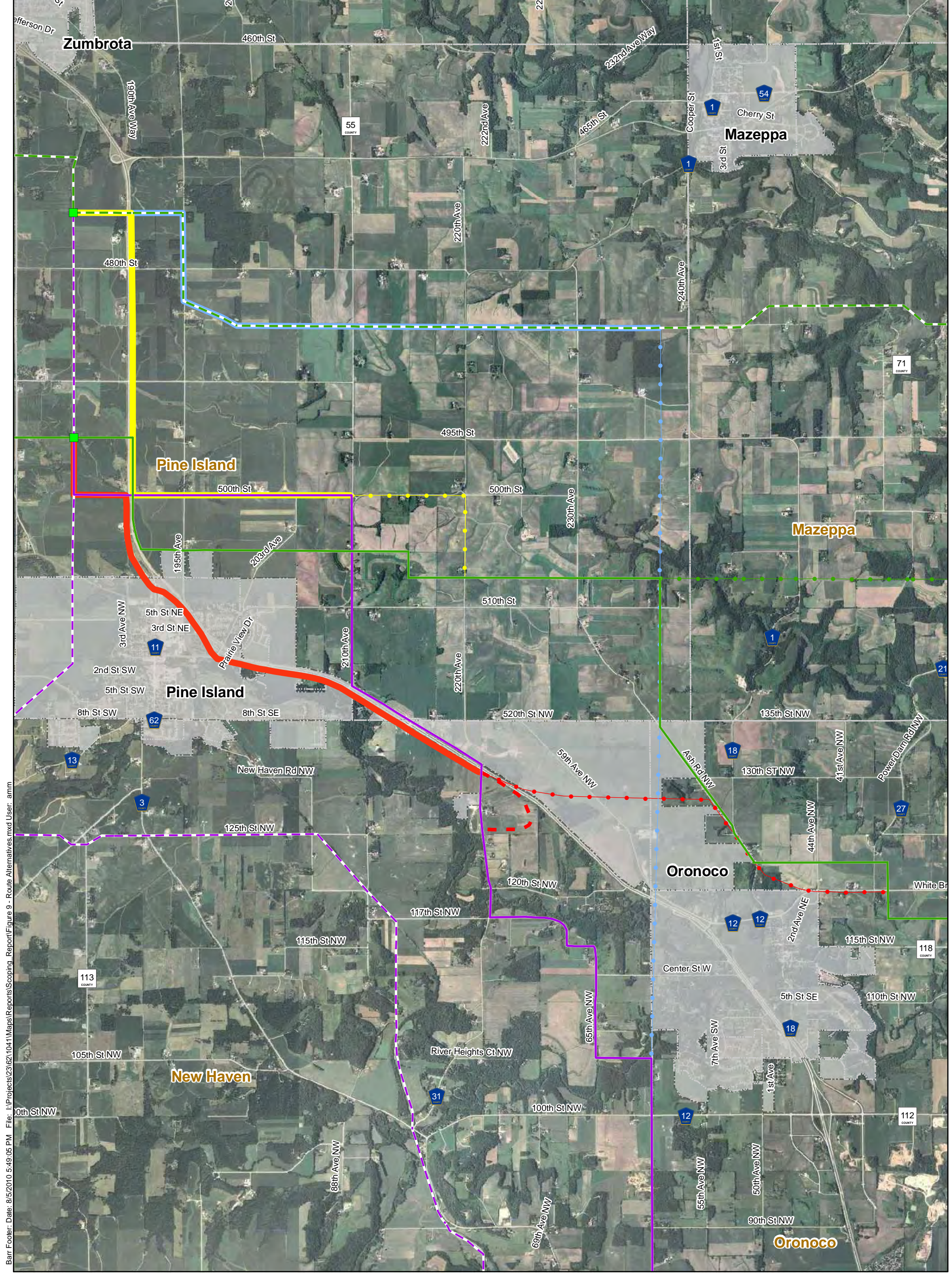


Figure 8

Route Alternatives Map 7 of 10  
 CapX2020  
 Hampton - Rochester - LaCrosse  
 345 kV Transmission Project

Barr Footer: Date: 8/5/2010 5:43:36 PM File: I:\Projects\23162\1041\Maps\Reports\Stopping\_Report\Figure 8 - Route Alternatives.mxd User: ammm





Barr Footer: Date: 8/5/2010 5:49:05 PM File: I:\Projects\23\62104\1\Maps\Reports\Scoping\_Report\Figure 9 - Route Alternatives.mxd User: ammm

- |   |   |  |
|---|---|--|
| <p><b>Applicant's 345 kV</b></p> <ul style="list-style-type: none"> <li><span style="color: green;">—</span> Preferred/Both</li> <li><span style="color: green;">- - -</span> Alternative</li> <li><span style="color: green;">●</span> Dam Option</li> </ul> <p><b>Applicant's 161kV</b></p> <ul style="list-style-type: none"> <li><span style="color: purple;">—</span> Preferred/Both</li> <li><span style="color: purple;">- - -</span> Alternative</li> </ul> | <ul style="list-style-type: none"> <li><span style="color: green;">■</span> Proposed Substation Locations</li> <li><span style="border: 1px dashed gray; display: inline-block; width: 10px; height: 10px;"></span> Townships</li> <li><span style="background-color: lightgray; display: inline-block; width: 10px; height: 10px;"></span> Municipality</li> </ul> | <p><b>2C3-001</b></p> <ul style="list-style-type: none"> <li><span style="color: red;">—</span> Segments 2 and 3 Combined</li> <li><span style="color: red;">- - -</span> Segment 2 Only</li> <li><span style="color: red;">●</span> Segment 3 Only</li> </ul> <p><b>2C3-003</b></p> <ul style="list-style-type: none"> <li><span style="color: blue;">—</span> Segments 2 and 3 Combined</li> <li><span style="color: blue;">- - -</span> Segment 2 Only</li> </ul> <p><b>2C3-006</b></p> <ul style="list-style-type: none"> <li><span style="color: yellow;">—</span> Segments 2 and 3 Combined</li> <li><span style="color: yellow;">●</span> Segment 3 Only</li> </ul> |
|---|---|--|

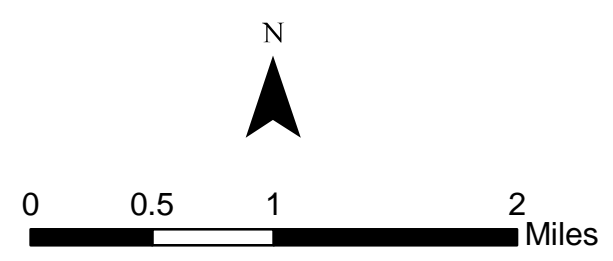
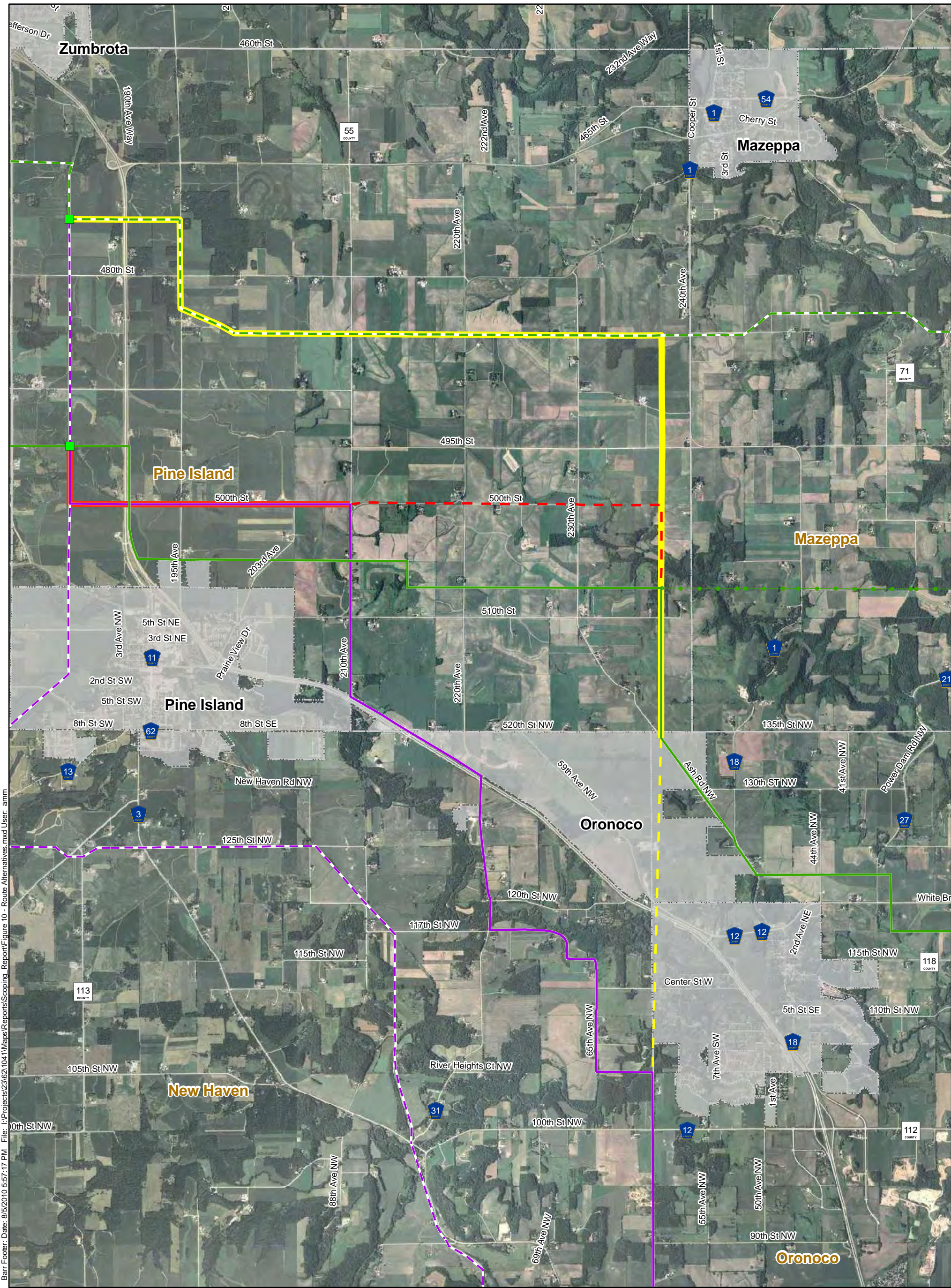


Figure 9  
 Route Alternatives Map 8 of 10  
 CapX2020  
 Hampton - Rochester - LaCrosse  
 345 kV Transmission Project



Barr Footer: Date: 8/5/2010 5:57:17 PM File: I:\Projects\23162104\1\Maps\Reports\Scoping\_Report\Figure 10 - Route Alternatives.mxd User: amm

- |  |  |  |
|--|--|--|
| <b>Applicant's 345 kV</b><br>— Preferred/Both<br>- - Alternative<br>● Dam Option | ■ Proposed Substation Locations<br>□ Townships<br>□ Municipality | <b>2C3-004</b><br>— Segments 2 and 3 Combined<br>- - Segment 2 Only<br><b>2C3-005</b><br>— Segments 2 and 3 Combined<br>- - Segment 3 Only |
|--|--|--|

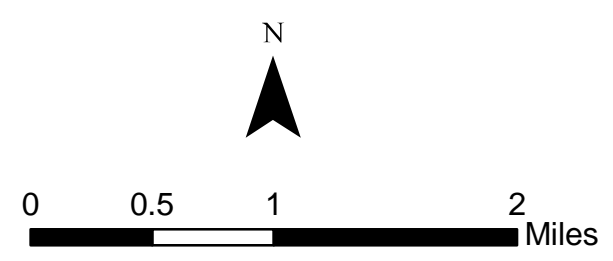
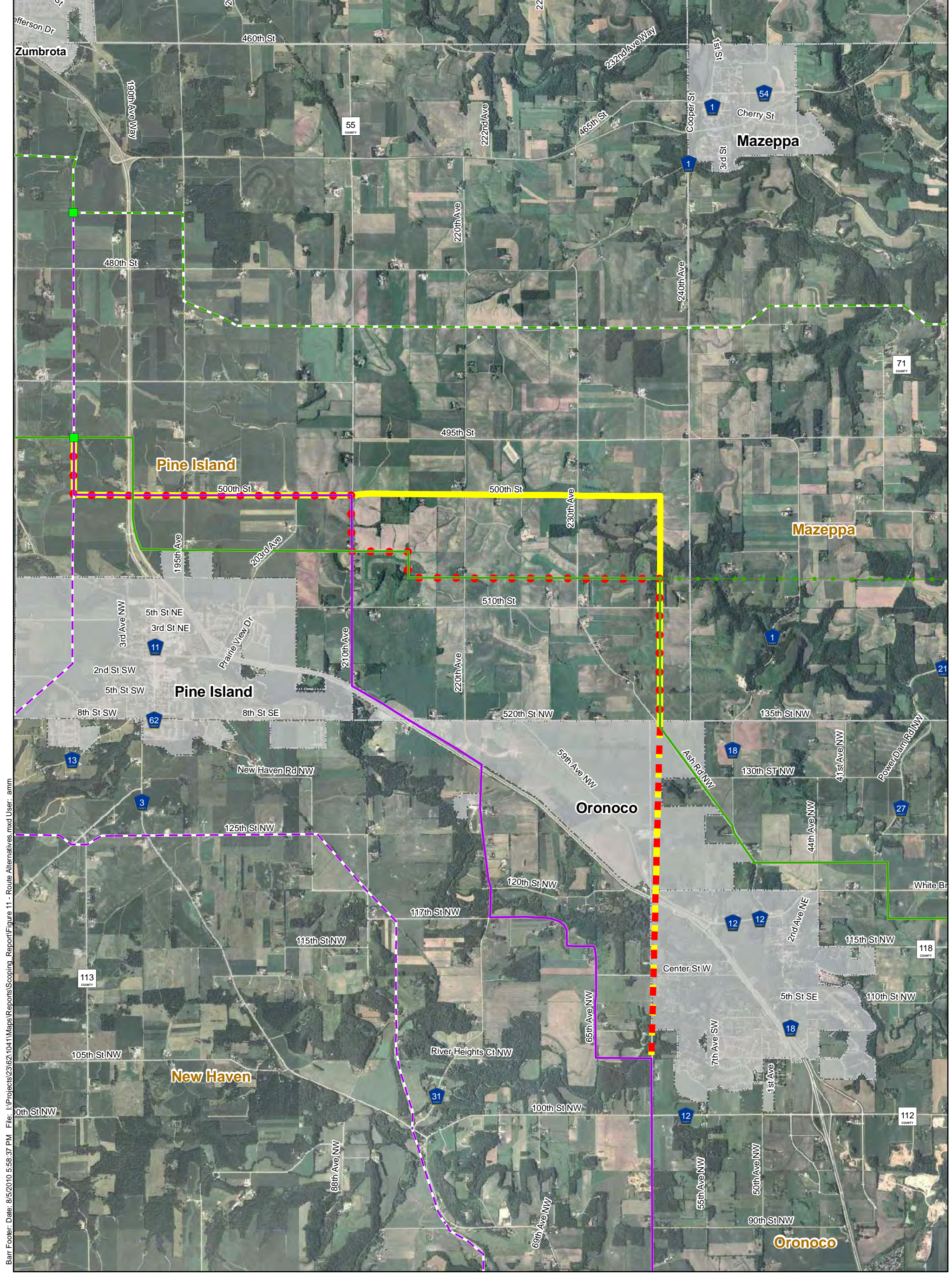


Figure 10  
 Route Alternatives Map 9 of 10  
 CapX2020  
 Hampton - Rochester - LaCrosse  
 345 kV Transmission Project



Barr Footer: Date: 8/5/2010 5:58:37 PM File: I:\Projects\231621041\Maps\Reports\Scoping\_Report\Figure 11 - Route Alternatives.mxd User: amm

- |   |  |   |
|---|--|---|
| <b>Applicant's 345 kV</b>                               | <span style="color: green;">■</span> Proposed Substation Locations   | <b>2C3-002</b>  |
| <span style="color: green;">—</span> Preferred/Both     | <span style="border: 1px dashed gray; display: inline-block; width: 10px; height: 10px;"></span> Townships   | <span style="color: red;">●</span> Segments 2 and 3 Combined    |
| <span style="color: green;">- - -</span> Alternative    | <span style="background-color: gray; display: inline-block; width: 10px; height: 10px;"></span> Municipality | <span style="color: red;">■</span> Segment 2 Only               |
| <span style="color: green;">- · - · -</span> Dam Option |  | <b>2C3-007</b>  |
| <b>Applicant's 161kV</b>                                |  | <span style="color: yellow;">—</span> Segments 2 and 3 Combined |
| <span style="color: purple;">—</span> Preferred/Both    |  | <span style="color: yellow;">■</span> Segment 2 Only            |
| <span style="color: purple;">- - -</span> Alternative   |  |   |

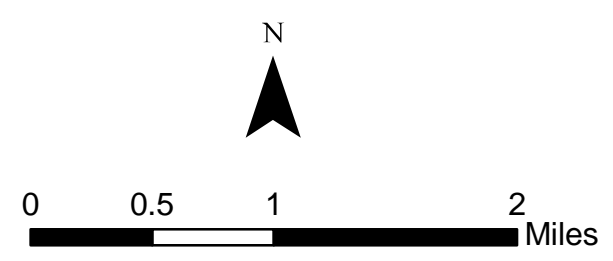
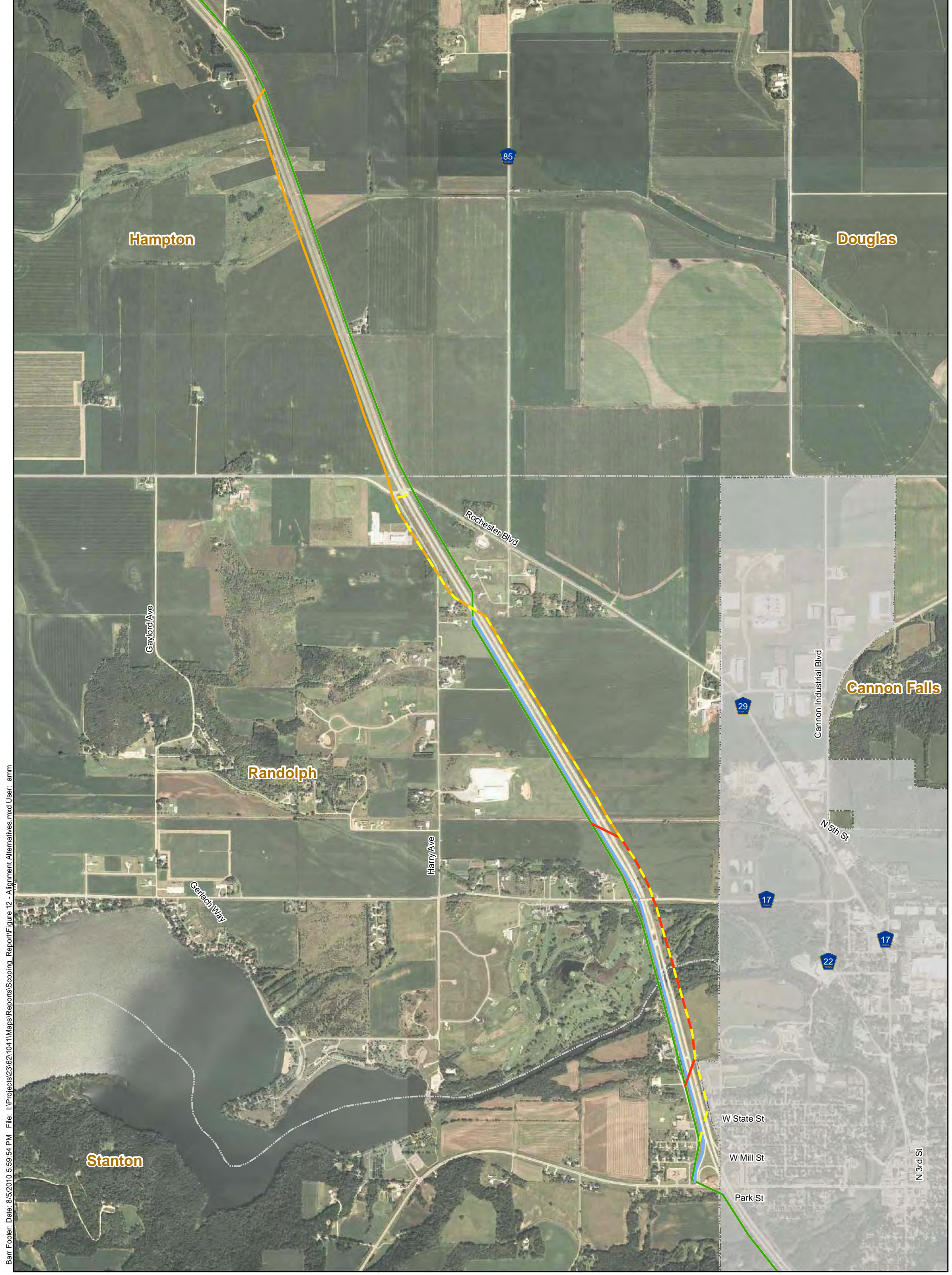
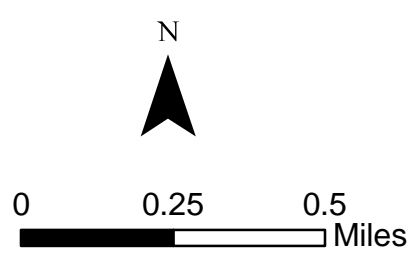


Figure 11  
 Route Alternatives Map 10 of 10  
 CapX2020  
 Hampton - Rochester - LaCrosse  
 345 kV Transmission Project

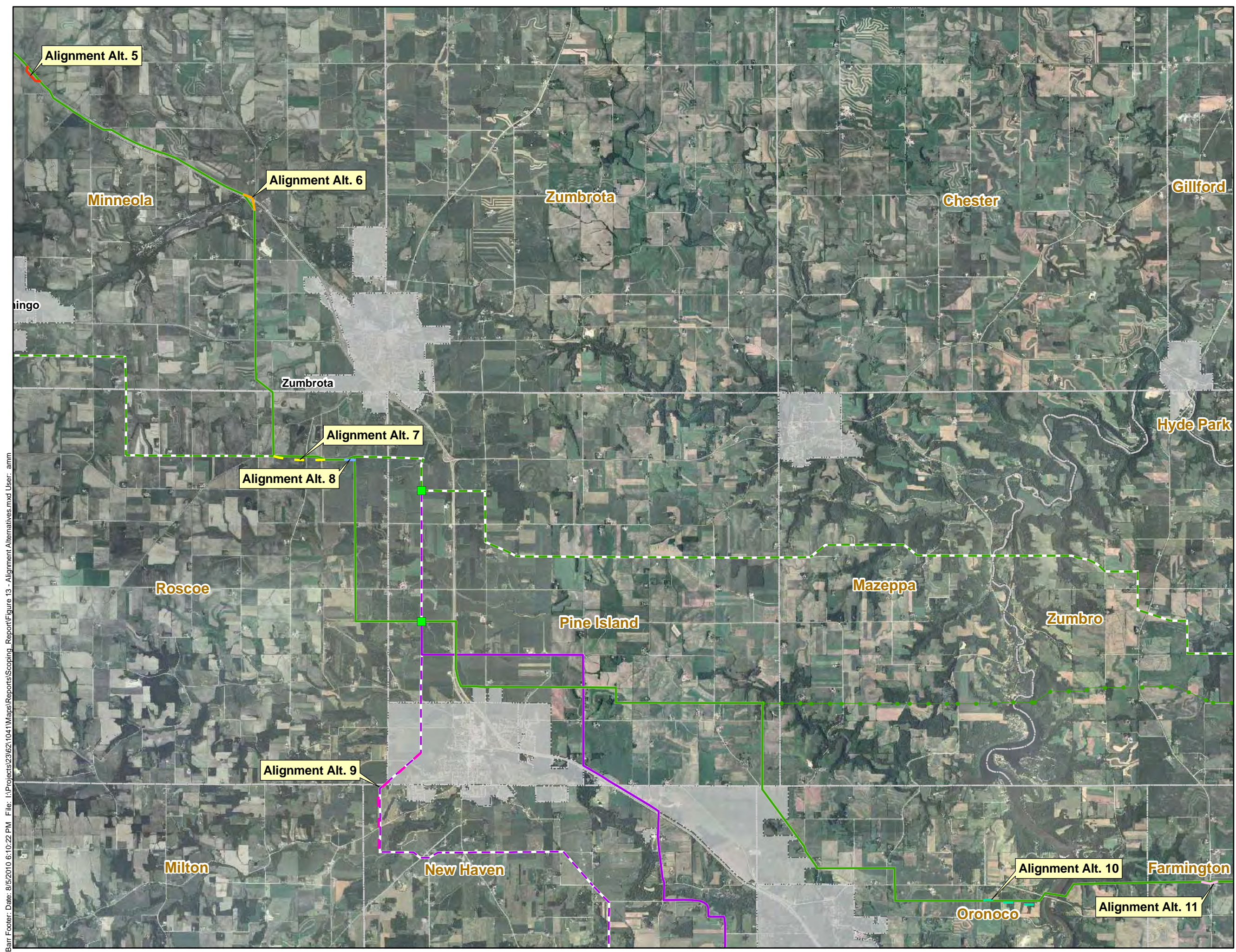


Barr Footer: Date: 8/5/2010 5:59:54 PM File: I:\Projects\23162\1041\Maps\Reports\Scoping\_Report\Figure 12 - Alignment Alternatives.mxd User: ammm

- |   |  |  |  |  |
|---|--|--|--|--|
| <b>Applicant's 345 kV</b>                             |  | <span style="color: green;">■</span> Proposed Substation Locations | <b>Alignment Alternatives</b>                          |  |
| <span style="color: green;">—</span> Preferred/Both   | <span style="border: 1px dashed gray;"> </span> Townships    | <span style="color: red;">—</span> Alignment Alt. 1                | <span style="color: orange;">—</span> Alignment Alt. 2 | <span style="color: yellow;">—</span> Alignment Alt. 3 |
| <span style="color: green;">- - -</span> Alternative  | <span style="border: 1px dashed gray;"> </span> Municipality | <span style="color: blue;">—</span> Alignment Alt. 4               |  |  |
| <span style="color: green;">●</span> Dam Option       |  |  |  |  |
| <b>Applicant's 161kV</b>                              |  |  |  |  |
| <span style="color: purple;">—</span> Preferred/Both  |  |  |  |  |
| <span style="color: purple;">- - -</span> Alternative |  |  |  |  |



**Figure 12**  
 Alignment Alternatives Map 1 of 3  
 CapX2020  
 Hampton - Rochester - LaCrosse  
 345 kV Transmission Project



**Applicant's 345 kV**

- Preferred/Both
- - - Alternative
- Dam Option

**Applicant's 161kV**

- Preferred/Both
- - - Alternative

■ Proposed Substation Locations

**Alignment Alternatives**

- Alignment Alt. 5
- Alignment Alt. 6
- - - Alignment Alt. 7
- Alignment Alt. 8
- - - Alignment Alt. 9
- - - Alignment Alt. 10
- Alignment Alt. 11

▭ Townships  
 ▭ Municipality

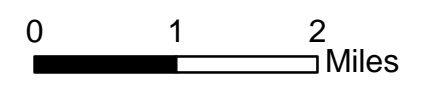


Figure 13

Alignment Alternatives Map 2 of 3  
 CapX2020  
 Hampton - Rochester - LaCrosse  
 345 kV Transmission Project

Barr Footer: Date: 8/5/2010 6:10:22 PM File: I:\Projects\231621041\Maps\Reports\Scoping\_Report\Figure 13 - Alignment Alternatives.mxd User: amm



**Applicant's 345 kV**

- Preferred/Both
- Alternative
- Dam Option

**Applicant's 161kV**

- Preferred/Both
- Alternative

Proposed Substation Locations

**Alignment Alternatives**

- Alignment Alt. 12
- Townships
- Municipality

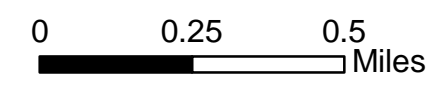


Figure 14  
Alignment Alternatives Map 3 of 3  
CapX2020  
Hampton - Rochester - LaCrosse  
345 kV Transmission Project