

APPENDIX C
ALASKA DEPARTMENT OF ENVIRONMENTAL
CONSERVATION DRINKING WATER PROTECTION AREAS

Alaska DEC Drinking Water Protection Areas

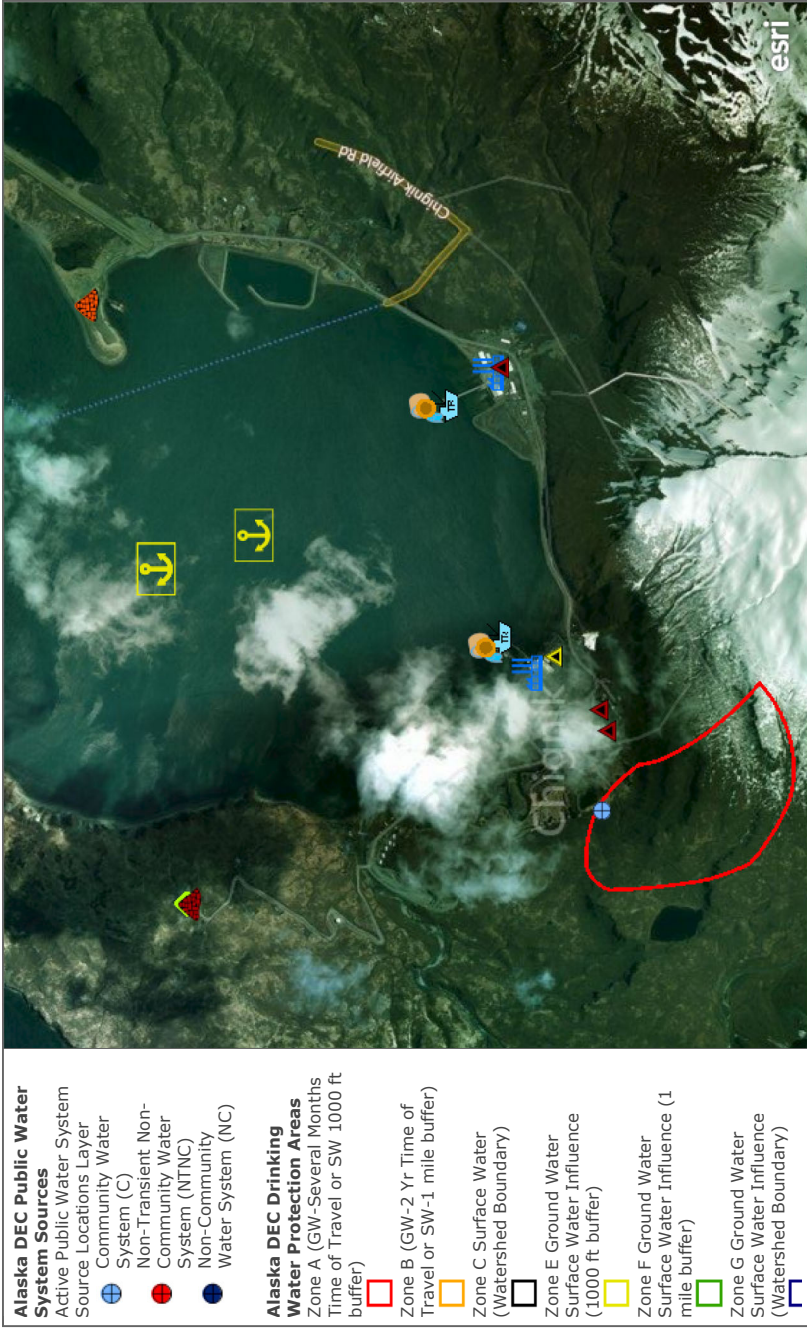


This map displays Public (regulated) Drinking Water Protection Areas and well/intake locations for known active public water systems. The data is continuously being revised.

© 2021 Microsoft Corporation, © 2021 Maxar, ©CNES (2021) Distribution Airbus DS, © 2021 TomTom | Copyright:© 2013 National Geographic Society, i-cubed | National Geographic, Esri, Garmin, HERE, UNEP-WCMC, USGS, NASA, ESA, METI, NRCAN, GEBCO, NOAA, increment P Corp. | Earthstar Geographics | SOA DCCED DCRA | Alaska Department of Natural Resources | Alaska Department of Environmental Conservation - Division of Water - Water Quality Standards, Assessment, & Restoration | Alaska Department of Environmental Conservation - Standards, Assessment, and Restoration | GIS Services Unit - DNR | be Alaska Department of Environmental Conservation - Division of Environmental Health - Solid Waste Program | ADEC Seafood & Aquaculture Permitting, Wastewater Discharge Authorization Program | Alaska Department of Environmental Conservation - Water Division - Seafood & Hatcheries Permitting, Wastewater Discharge Authorization Program | Alaska Department of Environmental Conservation - Contaminated Sites Program | Alaska Department of Environmental Conservation - Environmental Health - Drinking Water Program | State of Alaska Department of Environmental Conservation - Environmental Health - Drinking Water Program

CHIGNIK BAY

Alaska DEC Drinking Water Protection Areas

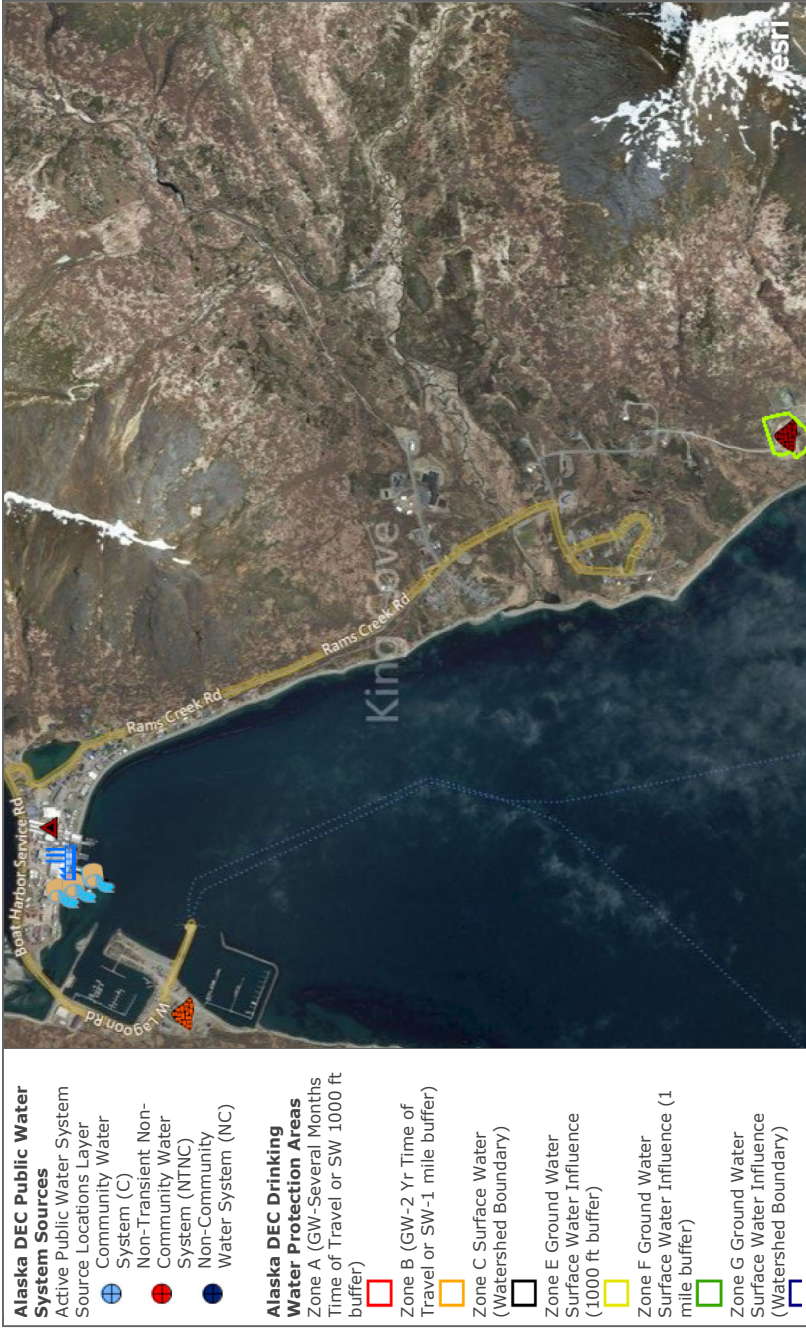


This map displays Public (regulated) Drinking Water Protection Areas and well/intake locations for known active public water systems. The data is continuously being revised.

© 2021 Microsoft Corporation, © 2021 Maxar, ©CNES (2021) Distribution Airbus DS, © 2021 TomTom | Copyright:© 2013 National Geographic Society, i-cubed | National Geographic, Esri, Garmin, HERE, UNEP-WCMC, USGS, NASA, ESA, METI, NRCAN, GEBCO, NOAA, increment P Corp. | Earthstar Geographics | SOA DCCED DCRA | Alaska Department of Natural Resources | Alaska Department of Environmental Conservation - Division of Water - Water Quality Standards, Assessment, & Restoration | Alaska Department of Environmental Conservation - Standards, Assessment, and Restoration | GIS Services Unit - DNR | be Alaska Department of Environmental Conservation - Division of Environmental Health - Solid Waste Program | ADEC Seafood & Aquaculture Permitting, Wastewater Discharge Authorization Program | Alaska Department of Environmental Conservation - Water Division - Seafood & Hatcheries Permitting, Wastewater Discharge Authorization Program | Alaska Department of Environmental Conservation - Contaminated Sites Program | Alaska Department of Environmental Conservation - Environmental Health - Drinking Water Program | State of Alaska Department of Environmental Conservation - Environmental Health - Drinking Water Program

KING COVE

Alaska DEC Drinking Water Protection Areas

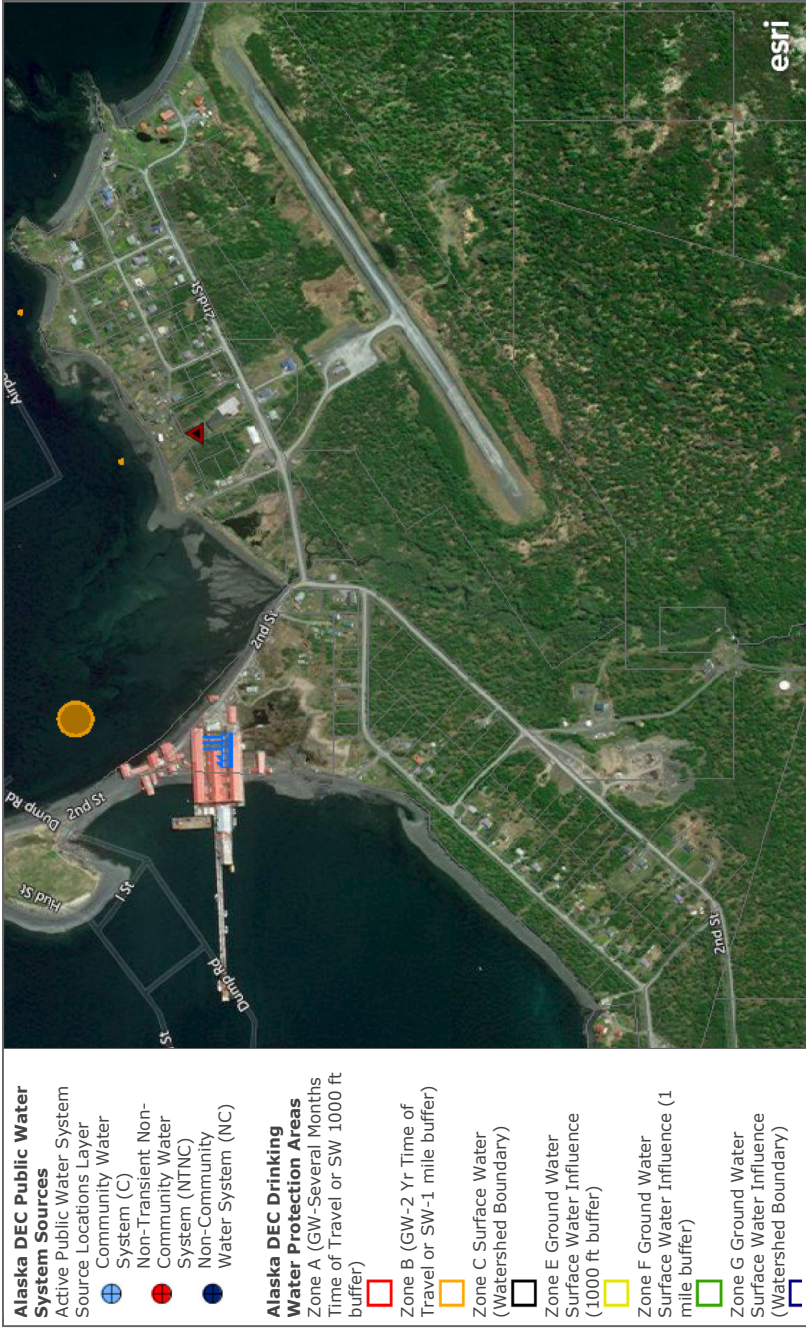


This map displays Public (regulated) Drinking Water Protection Areas and well/intake locations for known active public water systems. The data is continuously being revised.

© 2021 Microsoft Corporation, © 2021 Maxar, ©CNES (2021) Distribution Airbus DS, © 2021 TomTom | Copyright:© 2013 National Geographic Society, i-cubed | National Geographic, Esri, Garmin, HERE, UNEP-WCMC, USGS, NASA, ESA, METI, NRCAN, GEBCO, NOAA, increment P Corp. | Earthstar Geographics | SOA DCCED DCRA | Alaska Department of Natural Resources | Alaska Department of Environmental Conservation - Division of Water - Water Quality Standards, Assessment, & Restoration | Alaska Department of Environmental Conservation - Standards, Assessment, and Restoration | GIS Services Unit - DNR | be Alaska Department of Environmental Conservation - Division of Environmental Health - Solid Waste Program | ADEC Seafood & Aquaculture Permitting, Wastewater Discharge Authorization Program | Alaska Department of Environmental Conservation - Water Division - Seafood & Hatcheries Permitting, Wastewater Discharge Authorization Program | Alaska Department of Environmental Conservation - Contaminated Sites Program | Alaska Department of Environmental Conservation - Environmental Health - Drinking Water Program | State of Alaska Department of Environmental Conservation - Environmental Health - Drinking Water Program

LARSEN BAY

Alaska DEC Drinking Water Protection Areas



This map displays Public (regulated) Drinking Water Protection Areas and well/intake locations for known active public water systems. The data is continuously being revised.

© 2021 Microsoft Corporation, © 2021 Maxar, ©CNES (2021) Distribution Airbus DS, © 2021 TomTom | Copyright:© 2013 National Geographic Society, i-cubed | National Geographic, Esri, Garmin, HERE, UNEP-WCMC, USGS, NASA, ESA, METI, NRCAN, GEBCO, NOAA, increment P Corp. | Earthstar Geographics | SOA DCCED DCRA | Alaska Department of Natural Resources | Alaska Department of Environmental Conservation - Division of Water - Water Quality Standards, Assessment, & Restoration | Alaska Department of Environmental Conservation - Standards, Assessment, and Restoration | GIS Services Unit - DNR | be Alaska Department of Environmental Conservation - Division of Environmental Health - Solid Waste Program | ADEC Seafood & Aquaculture Permitting, Wastewater Discharge Authorization Program | Alaska Department of Environmental Conservation - Water Division - Seafood & Hatcheries Permitting, Wastewater Discharge Authorization Program | Alaska Department of Environmental Conservation - Contaminated Sites Program | Alaska Department of Environmental Conservation - Environmental Health - Drinking Water Program | State of Alaska Department of Environmental Conservation - Environmental Health - Drinking Water Program

SAND POINT

Alaska DEC Drinking Water Protection Areas

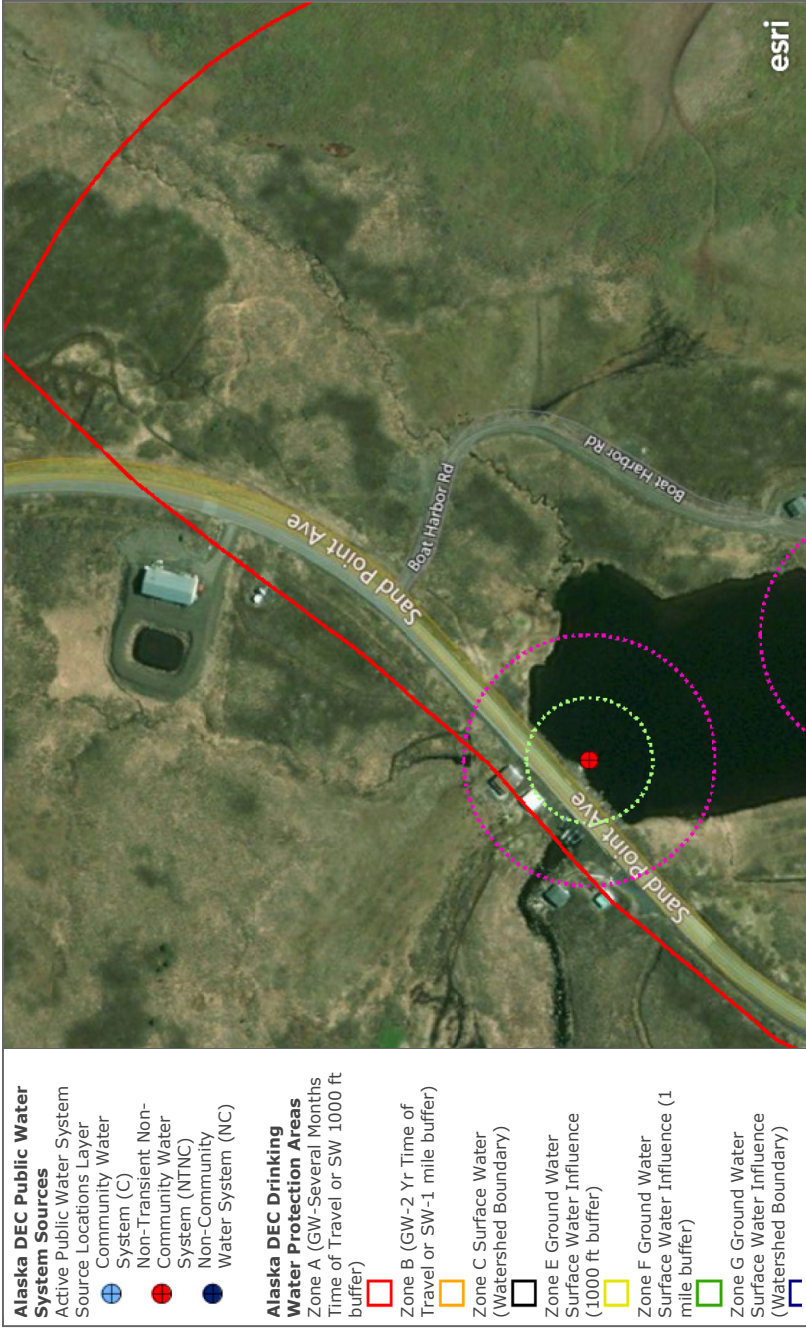


This map displays Public (regulated) Drinking Water Protection Areas and well/intake locations for known active public water systems. The data is continuously being revised.

© 2021 Microsoft Corporation, © 2021 Maxar, ©CNES (2021) Distribution Airbus DS, © 2021 TomTom | Copyright:© 2013 National Geographic Society, i-cubed | National Geographic, Esri, Garmin, HERE, UNEP-WCMC, USGS, NASA, ESA, METI, NRCAN, GEBCO, NOAA, increment P Corp. | Earthstar Geographics | SOA DCCED DCRA | Alaska Department of Natural Resources | Alaska Department of Environmental Conservation - Division of Water - Water Quality Standards, Assessment, & Restoration | Alaska Department of Environmental Conservation - Standards, Assessment, and Restoration | GIS Services Unit - DNR | be Alaska Department of Environmental Conservation - Division of Environmental Health - Solid Waste Program | ADEC Seafood & Aquaculture Permitting, Wastewater Discharge Authorization Program | Alaska Department of Environmental Conservation - Water Division - Seafood & Hatcheries Permitting, Wastewater Discharge Authorization Program | Alaska Department of Environmental Conservation - Contaminated Sites Program | Alaska Department of Environmental Conservation - Environmental Health - Drinking Water Program | State of Alaska Department of Environmental Conservation - Environmental Health - Drinking Water Program

SAND POINT

Alaska DEC Drinking Water Protection Areas



This map displays Public (regulated) Drinking Water Protection Areas and well/intake locations for known active public water systems. The data is continuously being revised.

© 2021 Microsoft Corporation, © 2021 Maxar, ©CNES (2021) Distribution Airbus DS, © 2021 TomTom | Copyright:© 2013 National Geographic Society, i-cubed | National Geographic, Esri, Garmin, HERE, UNEP-WCMC, USGS, NASA, ESA, METI, NRCAN, GEBCO, NOAA, increment P Corp. | Earthstar Geographics | SOA DCCED DCRA | Alaska Department of Natural Resources | Alaska Department of Environmental Conservation - Division of Water - Water Quality Standards, Assessment, & Restoration | Alaska Department of Environmental Conservation - Standards, Assessment, and Restoration | GIS Services Unit - DNR | be Alaska Department of Environmental Conservation - Division of Environmental Health - Solid Waste Program | ADEC Seafood & Aquaculture Permitting, Wastewater Discharge Authorization Program | Alaska Department of Environmental Conservation - Water Division - Seafood & Hatcheries Permitting, Wastewater Discharge Authorization Program | Alaska Department of Environmental Conservation - Contaminated Sites Program | Alaska Department of Environmental Conservation - Environmental Health - Drinking Water Program | State of Alaska Department of Environmental Conservation - Environmental Health - Drinking Water Program

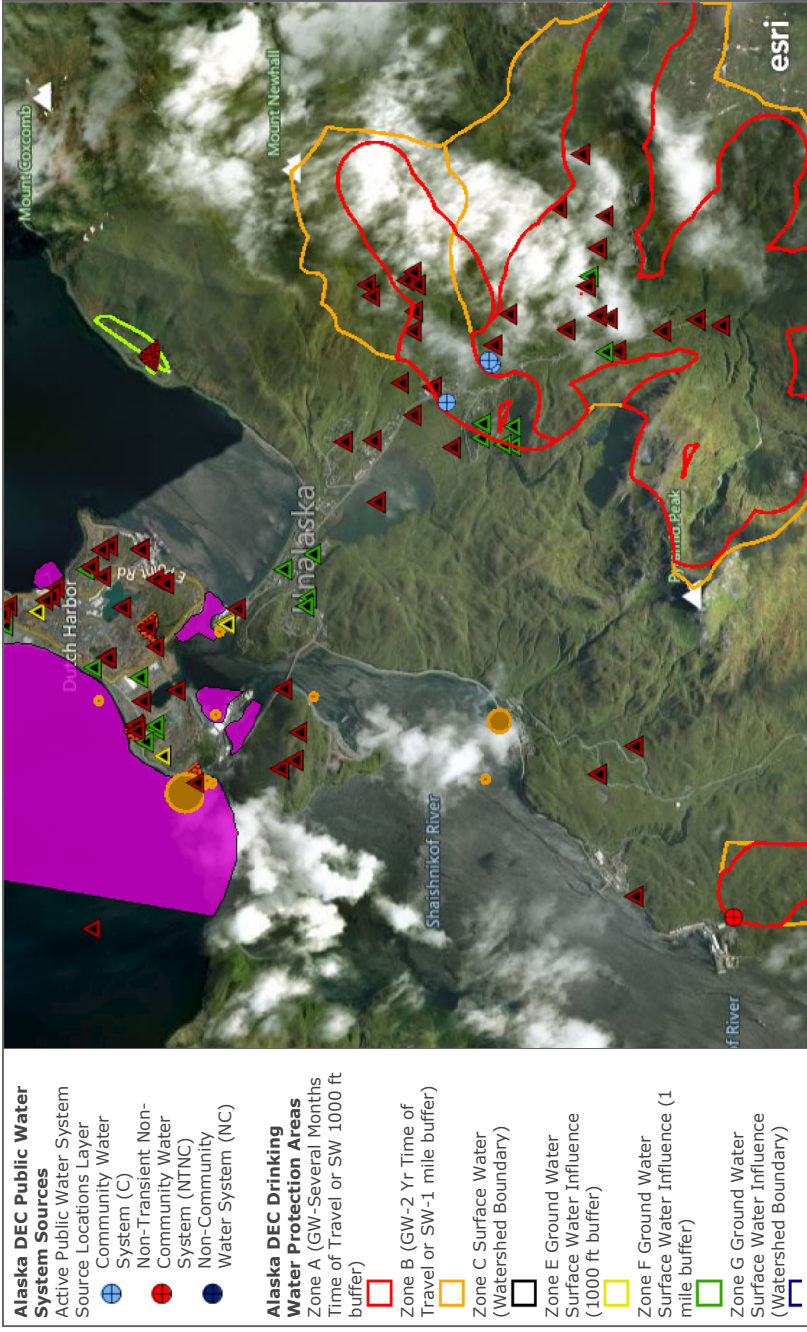
Alaska DEC Drinking Water Protection Areas



This map displays Public (regulated) Drinking Water Protection Areas and well/intake locations for known active public water systems. The data is continuously being revised.

© 2021 Microsoft Corporation, © 2021 Maxar, ©CNES (2021) Distribution Airbus DS, © 2021 TomTom | Copyright:© 2013 National Geographic Society, i-cubed | National Geographic, Esri, Garmin, HERE, UNEP-WCMC, USGS, NASA, ESA, METI, NRCAN, GEBCO, NOAA, increment P Corp. | Earthstar Geographics | SOA DCCED DCRA | Alaska Department of Natural Resources | Alaska Department of Environmental Conservation - Division of Water - Water Quality Standards, Assessment, & Restoration | Alaska Department of Environmental Conservation - Standards, Assessment, and Restoration | GIS Services Unit - DNR | be Alaska Department of Environmental Conservation - Division of Environmental Health - Solid Waste Program | ADEC Seafood & Aquaculture Permitting, Wastewater Discharge Authorization Program | Alaska Department of Environmental Conservation - Water Division - Seafood & Hatcheries Permitting, Wastewater Discharge Authorization Program | Alaska Department of Environmental Conservation - Contaminated Sites Program | Alaska Department of Environmental Conservation - Environmental Health - Drinking Water Program | State of Alaska Department of Environmental Conservation - Environmental Health - Drinking Water Program

Alaska DEC Drinking Water Protection Areas



This map displays Public (regulated) Drinking Water Protection Areas and well/intake locations for known active public water systems. The data is continuously being revised.

© 2021 Microsoft Corporation, © 2021 Maxar, ©CNES (2021) Distribution Airbus DS, © 2021 TomTom | Copyright:© 2013 National Geographic Society, i-cubed | National Geographic, Esri, Garmin, HERE, UNEP-WCMC, USGS, NASA, ESA, METI, NRCAN, GEBCO, NOAA, increment P Corp. | Earthstar Geographics | SOA DCCED DCRA | Alaska Department of Natural Resources | Alaska Department of Environmental Conservation - Division of Water - Water Quality Standards, Assessment, & Restoration | Alaska Department of Environmental Conservation - Standards, Assessment, and Restoration | GIS Services Unit - DNR | be Alaska Department of Environmental Conservation - Division of Environmental Health - Solid Waste Program | ADEC Seafood & Aquaculture Permitting, Wastewater Discharge Authorization Program | Alaska Department of Environmental Conservation - Water Division - Seafood & Hatcheries Permitting, Wastewater Discharge Authorization Program | Alaska Department of Environmental Conservation - Contaminated Sites Program | Alaska Department of Environmental Conservation - Environmental Health - Drinking Water Program | State of Alaska Department of Environmental Conservation - Environmental Health - Drinking Water Program

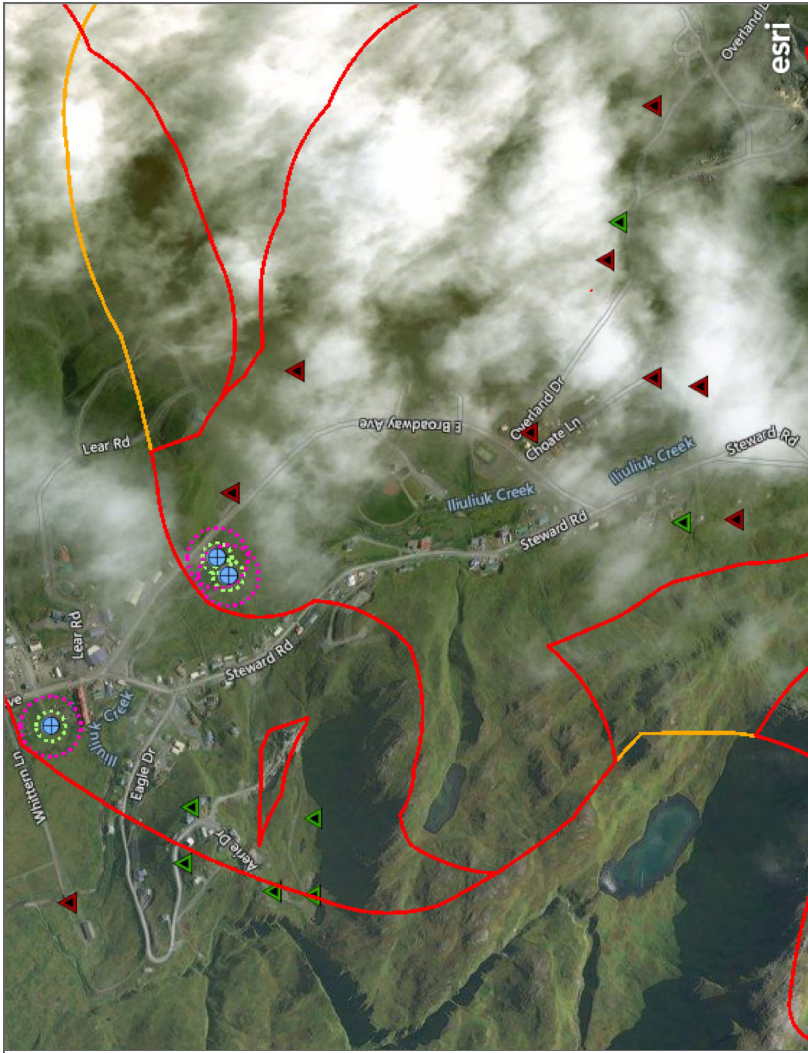
Alaska DEC Drinking Water Protection Areas

Alaska DEC Public Water System Sources

- Active Public Water System Source Locations Layer
- Community Water System (C)
- Non-Transient Non-Community Water System (NTNC)
- Non-Community Water System (NC)

Alaska DEC Drinking Water Protection Areas

- Zone A (GW-Several Months Time of Travel or SW 1000 ft buffer)
- Zone B (GW-2 Yr Time of Travel or SW-1 mile buffer)
- Zone C Surface Water (Watershed Boundary)
- Zone E Ground Water Surface Water Influence (1000 ft buffer)
- Zone F Ground Water Surface Water Influence (1 mile buffer)
- Zone G Ground Water Surface Water Influence (Watershed Boundary)



This map displays Public (regulated) Drinking Water Protection Areas and well/intake locations for known active public water systems. The data is continuously being revised.

© 2021 Microsoft Corporation, © 2021 Maxar, ©CNES (2021) Distribution Airbus DS, © 2021 TomTom | Copyright:© 2013 National Geographic Society, i-cubed | National Geographic, Esri, Garmin, HERE, UNEP-WCMC, USGS, NASA, ESA, METI, NRCAN, GEBCO, NOAA, increment P Corp. | Earthstar Geographics | SOA DCCED DCRA | Alaska Department of Natural Resources | Alaska Department of Environmental Conservation - Division of Water - Water Quality Standards, Assessment, & Restoration | Alaska Department of Environmental Conservation - Standards, Assessment, and Restoration | GIS Services Unit - DNR | be Alaska Department of Environmental Conservation - Division of Environmental Health - Solid Waste Program | ADEC Seafood & Aquaculture Permitting, Wastewater Discharge Authorization Program | Alaska Department of Environmental Conservation - Water Division - Seafood & Hatcheries Permitting, Wastewater Discharge Authorization Program | Alaska Department of Environmental Conservation - Contaminated Sites Program | Alaska Department of Environmental Conservation - Environmental Health - Drinking Water Program | State of Alaska Department of Environmental Conservation - Environmental Health - Drinking Water Program